

...warding Careers in Occupational Therapy



School of Occupational Therapy
Texas Woman's University

Denton, Texas

UNIVERSITY BULLETIN



Realistic Training Is Important at the TWU School of Occupational Therapy

UNIVERSITY BULLETIN

Number 568

May 15, 1959

Issued semi-monthly by Texas Woman's University at Denton, Texas. Entered December 17, 1917, Denton, Texas, as second class matter under Act of Congress, August 24, 1912.

Board of Regents

REAGAN HOUSTON III, Chairman	San Antonio
ED GOSSETT, Vice-Chairman	Dallas
MRS. EDGAR DEEN, Secretary	Fort Worth
R. H. COFFEE	Vernon
MRS. JOHN HAZLEWOOD	Amarillo
J. T. JOLLEY	Clarksville
MRS. JOHN T. JONES, JR.	Houston
MRS. NELDA C. STARK	Orange
HARVEY WUEST	Seguin

Administration

University Officers of General Administration

JOHN A. GUINN, Ph.D., President
FENTON KEYES, Ph.D., Dean of the Faculty, Dean of Graduate Studies
FRANCIS W. EMERSON, M.A., Dean of Admissions-Registrar
L. L. LARUE, B.B.A., Comptroller
JAMES A. TURMAN, Ed.D., Assistant to the President
ED. J. WILLIAMS, Business Manager, Plant Operations

School of Occupational Therapy

RENA C. WORTHINGTON, B.S., O.T.R., Director
RUTH J. WHIPPLE, M.A., O.T.R., Assistant Director

Cover: School of Occupational Therapy on TWU Campus



Parkland Hospital, Dallas, One of the Centers for Clinical Affiliation

General Information

Texas Woman's University has the only accredited School of Occupational Therapy in the Southwest, one of twenty-seven universities in the nation offering this curriculum.

Occupational Therapy is a branch of medicine which employs creative activity. It may be training in the requirements of daily living or in the vocational aspects of physical and mental rehabilitation.

Texas Woman's University pioneered in establishing its great School of Occupational Therapy during World War II when astounding accomplishments had been made in this medical profession.

It has continued to grow in size and recognition every year, and now its graduates are serving throughout the United States and its possessions, as well as in foreign countries.

Functions

The School of Occupational Therapy of the Texas Woman's University trains young women for a highly useful career. No field of endeavor provides a greater challenge or requires more insight into the society in which we live. Those planning to enter the profession of Occupational Therapy must complete the training for comprehensive treatment care, must be able to function as a member of a medical team, and must possess special aptitudes for counseling, teaching, and patient care. They must possess an appreciation for the dignity and worth of an individual regardless of his or her handicaps. A background in Occupational Therapy often leads one to interesting post-graduate studies or to important administrative positions.

Rewarding Career

The School of Occupational Therapy of the Texas Woman's University has a carefully planned curriculum which prepares its students for a satisfying, remunerative career in the treatment of the handicapped in these areas: Crippled Children, Physical Disabilities, Mental Disorders, Emotional Disorders, Mental Retardation, Geriatrics, General Medicine and Surgery, and Tuberculosis.



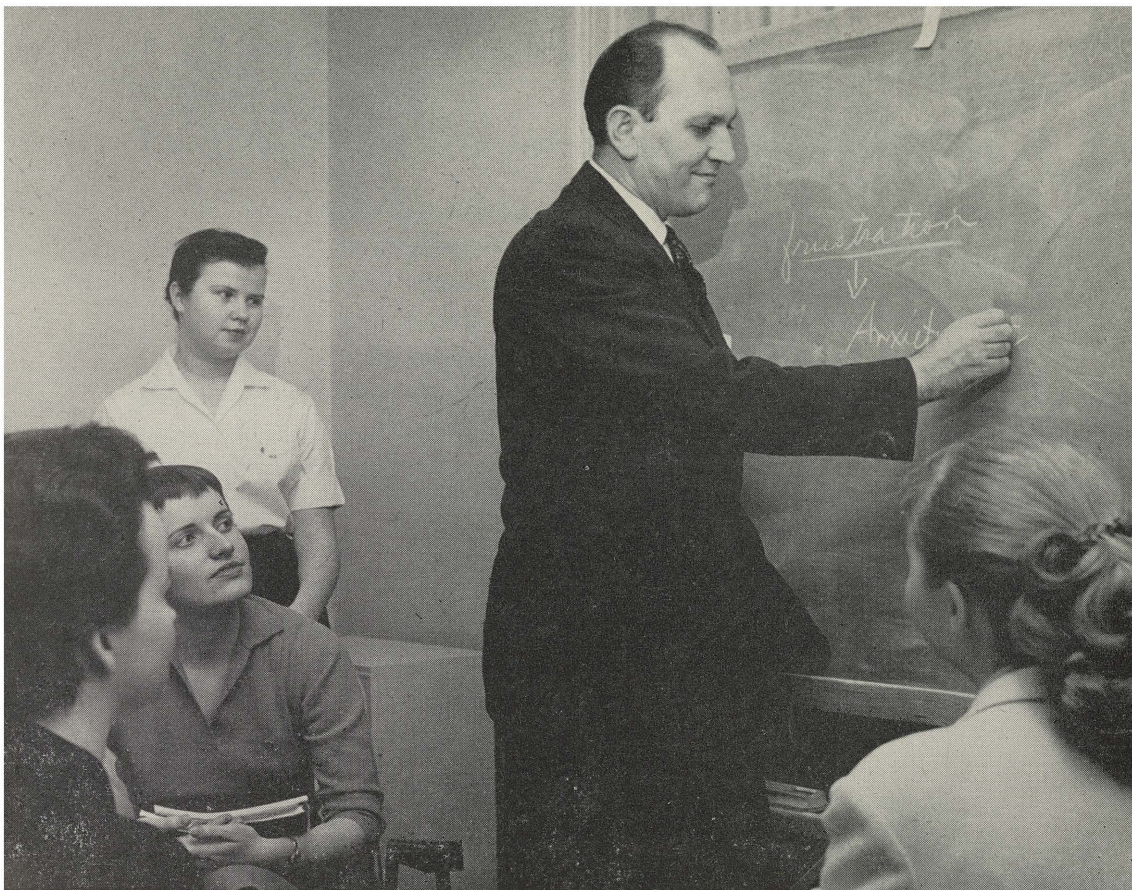
**Demonstration of Adaptive Equipment to Be Used in Treatment
of the Physically Handicapped**

Opportunities

Registered Occupational Therapists have unlimited opportunities throughout the nation and around the world. All areas of the nation are making tremendous strides forward in providing medical rehabilitation facilities. Salaries compare very favorably with those of other leading medical professions.

Residence Facilities

Dormitory facilities on the beautiful Denton campus afford maximum convenience and comfort at minimum expense. While in their clinical year students usually live in quarters provided for medical personnel.



Medical Lecture in Progress

University Organizations and Activities

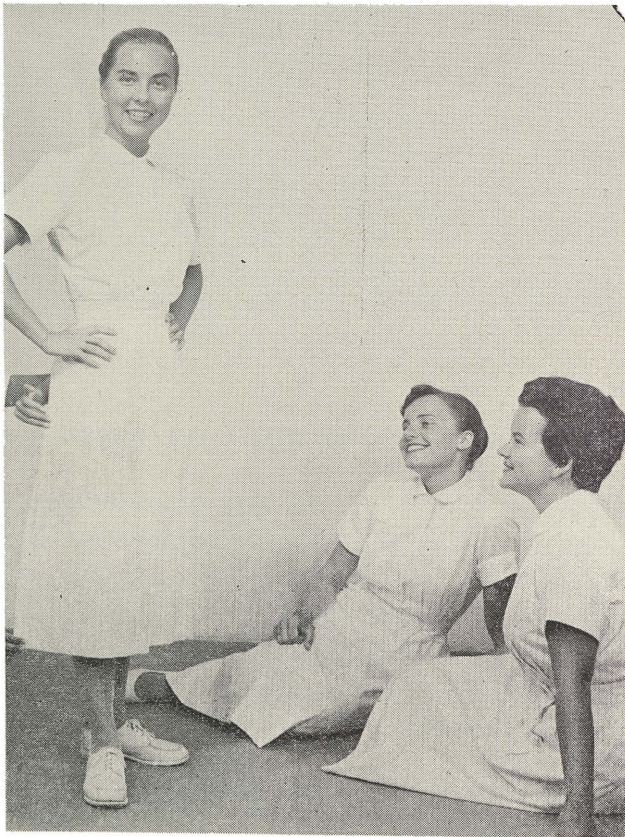
In addition to the other University organizations and social functions, students who are majoring in Occupational Therapy find in their own Occupational Therapy Club a variety of activities geared to their special interests. In cooperation with the regular Texas Woman's University counseling service, the School of Occupational Therapy provides a faculty advisor and guidance for its undergraduates and graduates.

Scholarships

A variety of substantial scholarships are available. Awards are made annually to deserving applicants of exceptional promise who need financial assistance to enter the Texas Woman's University.

Accreditation and Approval

The Texas Woman's University is fully accredited by all appropriate national and regional agencies, including the Southern Association of Colleges and Secondary Schools, and the Association of Texas Colleges. TWU's School of Occupational Therapy is accredited by the American Medical Association and the American Occupational Therapy Association. Graduates are eligible to take the National Registration Examination, given by the American Occupational Therapy Association, for Registered Occupational Therapist (OTR).



Students Model Uniforms Before Leaving For Clinical Experience at Hospitals and Rehabilitation Centers

Preclinical Training

Students participate in actual clinical situations on the undergraduate level at a number of accredited hospitals and rehabilitation centers in Dallas and Fort Worth metropolitan areas. These include the units of the Dallas County Hospital System (Parkland Memorial Hospital, a teaching hospital, and Woodlawn Tuberculosis Hospital, a Psychiatric Unit); Texas Scottish Rite Hospital; Dallas Society for Crippled Children; Timberlawn Mental Hospital; William B. Carrell School for Exceptional Children; Golden Acres; Fort Worth Society for Crippled Children and Adults, Inc.; and the U.S. Public Health Service Hospital. The Texas Woman's University School of Occupational Therapy has an excellent faculty and utilizes the services of outstanding lecturers in medical education.

Clinical Experience

Ten months of required clinical work is distributed among the following areas: Physical Disabilities, Pediatrics, Psychiatry, Tuberculosis, and General Medicine and Surgery. Affiliated rehabilitation centers, hospitals, and schools are located throughout the United States. Approved centers currently used for training include: Parkland Memorial Hospital, Dallas, Texas; Gonzales Warm Springs Foundation, Gonzales, Texas; Children's Medical Center, Tulsa, Oklahoma; Menninger's Foundation, Topeka, Kansas; University of Michigan Medical Center, Ann Arbor, Michigan; Nebraska Psychiatric Institute, Omaha, Nebraska; New York State Hospital, New York, New York; Veterans Administration Hospitals at Waco and Houston, Texas, at American Lake, Washington, at Hines, Illinois, and at Memphis, Tennessee; the Fort Worth Society for Crippled Children and Adults, Inc.; the Woodrow Wilson Rehabilitation Center at Fishersville, Virginia, and many others.

Curricular Plans

FOR HIGH SCHOOL GRADUATES: The School of Occupational Therapy of the Texas Woman's University provides an opportunity to combine professional and educational courses leading to the Bachelor of Science or Bachelor of Arts degrees and the coveted O.T.R. Those who begin their Occupational Therapy studies in the Freshman year may normally expect to complete the required sequence in five years. The curriculum in O.T., which conforms to the standards of the American Medical Association, the American Occupational Therapy Association, and of the Texas Woman's University, is shown on pages 12-13 of this booklet.



Time Out For Relaxation!

FOR COLLEGE GRADUATES: Requirements may be completed for the Advanced Standing Curriculum Course in approximately two academic years. Successful completion of the prescribed courses will qualify a candidate for the certificate in Occupational Therapy, provided that she passes the Registration Examination. After completion of the required clinical courses all graduates are eligible to take the National Registration Examination offered by the American Occupational Therapy Association. Passing the examination is necessary before one becomes professionally qualified to practice and use the designation of "OTR" after one's name.



(Above) Hubbard Hall, the Central Dining Unit

Degree Plan For Occupational Therapy Students

BACHELOR OF SCIENCE

First Semester

Second Semester

FRESHMAN

	Hours		Hours
Art (Basic Design) 121E	2	Art (Basic Design) 122E	2
Biology (Principles of) 131	3	Biology (Principles of) 132	3
English (Comp. and Lit.) 131	3	English (Comp. and Lit.) 132	3
HAS (Clothing) 135B	3	HPER (Physical Ed.)	1
History (U.S. 1492-1865) 133	3	O. T. (Minor Crafts) 135	3
HPER (Physical Ed.)	1	Orientation (Personality) 112	1
O.T. (Intro. to Rehab. Therapies) 1111	1	Psychology (Intro. to Gen.) 231	3
Orientation (Personality) III	1		16
	—		
	17		

SOPHOMORE

English (Survey of Eng. Lit.) 231	3	Art (Woodwork) 231T	3
HAS (Weaving) 334J	3	English (Survey of Eng. Lit.) 232	3
History (U.S. since 1865) 134	3	HPER (Physical Ed.)	1
HPER (Physical Ed.)	1	O.T. (Theory of O.T.) 222	2
O.T. (Dev. and Theory of O.T.) 221	2	Sociology (Intro. to) 135	2
Zoology (Human Anatomy and Physiology) 231	3	Zoology (H. Anat. & Physiol.) 232	3
Elective	1		—
	—		15
	16		

JUNIOR

Art (Metal Work) 331J	3	Art (Pottery-Basic Processes) 331L	3
Gov. (Am. Gov. and Citiz.) 231	3	HPER (Gross Anatomy of Skeleton, Joints and Muscles) 234U	3
HPER (Gross Anatomy of Skeleton Joints and Muscles 233U	3	O.T. (Preclinical-Orthopedic and Neurological Cases) 314	1
O.T. (Pediatrics and C.P. Medical Lectures) 312	1	Psychology (Child Psy.) 433	3
O.T. (Preclinical Case Evalua- tion in Med. and Surg. Pat.) 313	1	Minor	3
Sociology (Current Social Prob.) 232	3	Elective	1
Elective	2	O.T. (Rehabilitation) 321	2
	—		—
	16		16

SENIOR

Medical Lectures (311, Orthopedics, 315-Neurology, 343-Clinical Subjects, 411-Psychiatry)	7	Gov. (Am. and Texas Gov.) 232	3
O.T. (Org. and Admin.) 431	3	O.T. (Adv. Theory and Prac.) 430	3
O.T. (Adv. Applied Kinesiology) 434	3	O.T. (Seminar in Rehab. Tech.) 433	3
	—	Psychology (Mental Hygiene) 434	3
	13	Minor	3
		Elective	2
			—
			17

FIFTH YEAR (Clinical Experience)

O.T. Pediatrics 481	8	O. T. Psychiatrics 484	8
O.T. Gen. Med. and Surg. 482	8	O.T. Physical Disabilities 485	8
O.T. Tuberculosis 483	8		

Advanced Standing Certificate Course

Prerequisites: B.A. or BS in related fields and completion of:

	Hours
Anatomy and Kinesiology	6
Human Anatomy and Physiology	6
Basic Design	3
Psychology	6
Sociology	4

FIRST YEAR

Medical Lectures (311-Orthopedics, 312-Pediatrics, 315-Neurology, 343-Clinical Subjects, 411-Psychiatry).....	8	Art (Woodworking) 231T.....	3
O. T. (Adv. Theory & Practice) 432.....	3	HAS (Weaving) 334J	3
O.T. Adv. Applied Kinesiology 43 4.....	3	O.T. (Pre-Clinical) 313	1
	14	O.T. (Adv. Theory & Prac.) 430	3
		O.T. (Organization and Adm.) 431.....	3
		O.T. Rehabilitation Techniques 433.....	3
			16

SECOND YEAR (Clinical Experience)

O.T. (Pediatrics) 481	8	O.T. Pediatrics 484	8
O.T. (General Med. & Surgical) 482	8	O.T. Physical Disabilities 485	8
O.T. (Tuberculosis) 483	8		

Students desiring additional information on admissions should write to:

Mr. Francis W. Emerson
Dean of Admissions-Registrar
Texas Woman's University
Drawer A, University Hill Station
Denton, Texas

Students desiring additional information about professional courses of study in the School of Occupational Therapy should write to:

Mrs. Rena C. Worthington
Director, School of Occupational Therapy
Texas Woman's University
Box 3718, University Hill Station
Denton, Texas

