

University  
Bulletin  
551



*Redbud Festival Time at TWU*

*A Glimpse of*  
**TEXAS WOMAN'S UNIVERSITY**  
Denton, Texas

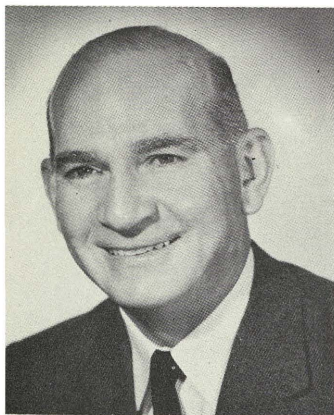
UNIVERSITY BULLETIN

No. 551

September 1, 1958

Published by the Texas Woman's University, Denton, Texas. Issued semi-monthly. Entered December 17, 1917, at the post office at Denton as second-class matter under Act of Congress of August 24, 1912.

# To All High School Senior Girls, Greetings:



**T**HE Texas Woman's University, a major state-supported institution of higher learning exclusively for women students, fulfills many vital educational needs. Its curricula lead to the bachelor's, master's, and doctor's degrees, and its research programs and public services cover a wide range.

Details concerning TWU's distinguished programs and its unusual resources are available in standard bulletins designed primarily for those, who as students or prospective students, have a fully developed interest in such information. These include *Careers for Women*, the *General Catalogue*, the *Graduate School Bulletin*, and the specialized publications issued from time to time by component departments, colleges, and professional schools.

This little booklet, however, was prepared for the broader purpose of making available to ambitious high school girls and their parents a brief and convenient medium for establishing an acquaintance with the nature, objectives, curricula, opportunities, and wonders of the Texas Woman's University. Although small, this bulletin may start you on the road to a wise conclusion: namely, that TWU is the school for you.

We want you to discover that you need only to be eligible for admission to TWU in order to enjoy, at astonishingly low cost, the associations of a friendly university, the satisfactions of an environment rich in social, recreational, cultural, and spiritual traditions, and the advantages of magnificent resources in an institution with a distinguished record and an honored name.

We welcome visitors and are always prepared to assist them. You and your parents are cordially invited to come up for a look around, to ask questions, perhaps to select a room while you are here. A visit to Texas Woman's University is a significant and stimulating experience.

If you desire more information about the Texas Woman's University, or details about some one or more of its curricula, please feel free to address an inquiry to the Registrar. (See Reservation and Request Blank provided for your convenience at the back of this pamphlet.)

Cordially yours,

JOHN A. GUINN, *President.*

# *Texas Woman's University*

Texas Woman's University is located in Denton, Texas, a progressive home and church city of 30,000 people vitally interested in the University and all phases of education. The campus is in the northeastern part of the city with State Highway 24 along its north boundary.

The University is in the Dallas-Fort Worth metropolitan area. These cities offer many additional cultural and social advantages as well as laboratory facilities in Nursing, Public Health Training, Social Welfare, Merchandising, Fashion Art, Music, Radio and Television, Speech Therapy, Occupational Therapy, Recreation Administration, etc.

Dormitories and classrooms are located a short walk or city bus ride from up-to-date shops, modern theaters, fine churches, and the main business establishments of Denton. In the other direction on the 220-acre campus are the recreational facilities, including an 18-hole golf course and 50 x 150 outdoor pool. Campsites for students are located on Texoma and Garza-Little Elm lakes.

The University buildings number more than 60. They include 18 Residence Halls, Bralley Memorial Library, and Education, Fine Arts, Music-Speech, Household Arts and Sciences, Journalism, Science, and Student Union Buildings, in addition to the Auditorium, Research Building of the College of Household Arts and Sciences, Central Dining Unit, Little Chapel-in-the-Woods, and many others.

Four handsome air-conditioned buildings were completed two years ago. They are the South's most complete and modern Health, Physical Education and Recreation Building for women, a Library Science Building that is the only one of its kind in the nation, a Classroom Unit (shown on middle pages of this booklet), and a new Administration Building.

Now under construction are a large Classroom Addition, Swimming Pool and Aquatics Sports Facility, Library Addition, Redbud Auditorium, Cooperative Dormitory, and Demonstration School.

## *Texas Woman's University Goal*

Texas Woman's University provides superior educational opportunities for its students in an environment adapted to their distinctive requirements as women destined for important responsibilities of living as well as leadership.

In the unusually democratic atmosphere which prevails on the campus there are endless opportunities for leadership experience in dormitory, class, and club activities. Group life in the residential system encourages self-development by providing each student with abundant incentives for cultivating diversified interests and individual abilities. The atmosphere of the University is conducive to intellectual growth, but strong emphasis is also placed on recreation, on social and cultural diversion, on fun.

Over and above its general mission of developing women who combine such characteristics as competence and charm, culture and self-reliance, enthusiasm and poise, character and tolerance, the University recognizes its responsibility to train students to be high-minded citizens full of a deep, abiding respect for both the glories and the obligations of American citizenship.

We want you to discover that you need only be eligible for admission in order to enjoy, at a very moderate cost, the associations of a friendly university, the satisfactions of an environment rich in social, recreational, cultural, and spiritual traditions, and the advantages of magnificent resources in an institution with a distinguished record.

Be sure to send in the handy request form on the inside back page. It's a quick way to:

1. Get your copy of the new *Careers for Women* bulletin;
2. Request more information on courses of study from Deans and Directors;  
and
3. Apply for Entrance Application.

Also, for more information about Scholarships, Work Opportunities, and the Cooperative System, see or write Mr. Francis W. Emerson, Dean of Admissions-Registrar, Texas Woman's University, Drawer A, University Hill Station, Denton, Texas. His office is in the new Administration Building. His telephone number is DUpont 2-7322. If possible, visit the campus soon.



*East Front, Central Dining Unit*

## *High Ranking*

Texas Woman's University, a fully accredited institution, is nationally recognized for its all-around excellence. The University consists of various component colleges and professional schools which offer unparalleled opportunities for general and specialized training of homemakers and top women careerists.

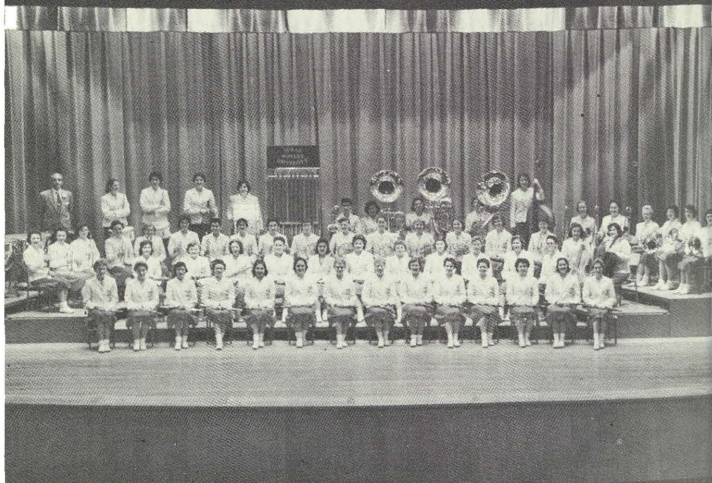
A strong graduate school attracts many ambitious and outstanding women who seek advancement through studies leading to the master's and doctor's degrees.

Although entrance as a freshman has many advantages and permits early specialization, the superiority of career courses also attracts many graduates of junior colleges and transfers from other institutions.

Traditionally the University has a cosmopolitan student body, attracting as it does outstanding students from various parts of the United States and foreign countries.

(Write for your copy of the *Careers for Women* bulletin for more information on the opportunities listed on back of booklet.)





*The Lass-O Band*

## *Needs of Women Stressed*

Although many degree sequences in highly technical courses are available at TWU, every graduate gets a solid foundation in liberal arts. The liberal arts curriculum, interrelated with the content of the professional courses, is directed toward your balanced development.

All courses are organized and taught to meet the special needs and interests of women.

The University believes that these needs and interests of women must be met through education designed for the lives of women.

This belief is amply justified by the typical student's rapid development scholastically and personality-wise, and through the success of its graduates in a wide variety of fields, both creative and professional, and as homemakers and community leaders.



*Queen Is Crowned at Redbud Festival*

## *Superior Guidance and Counseling*

The University has a complete guidance and counseling program designed to aid students in making decisions and adjustments.

Trained experts, including the director of placement and guidance, the special guidance counselor, dean of women, dean of admissions, and dean of the faculty, take part in this work so that the student may plan her educational program in the most intelligent manner and develop her potentialities to the maximum.

Each member of the faculty is a personal adviser to a small group of students, giving to each student occupational and personal guidance based on her experience, tested aptitudes, and personal goals.

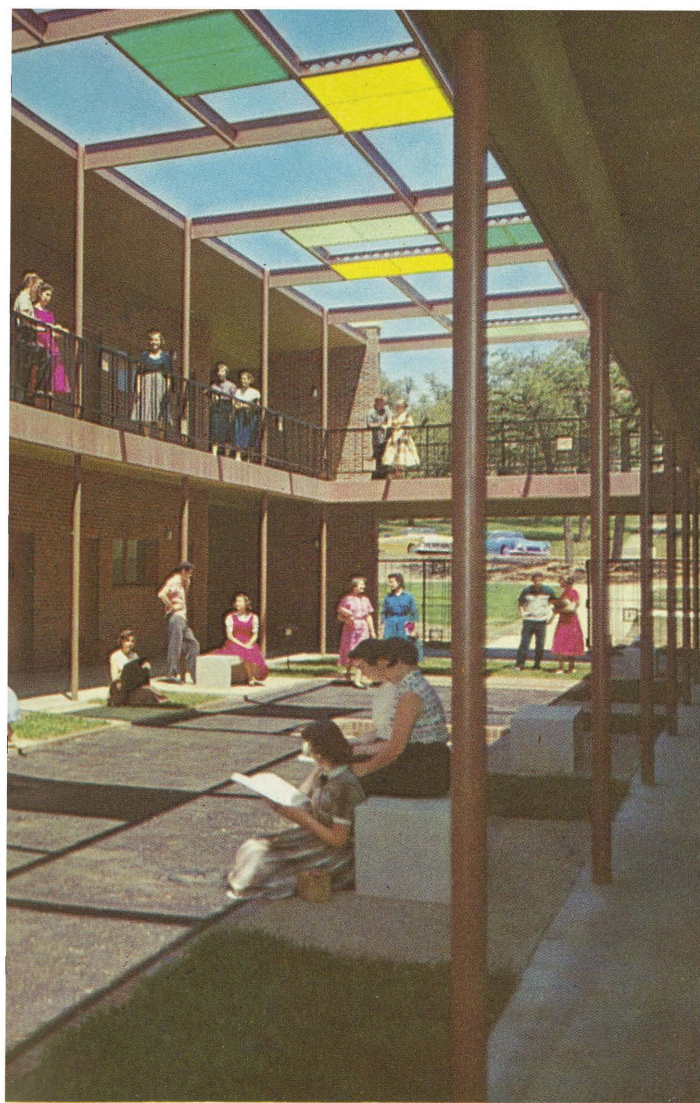
Advisers always are available for assistance with any type of student problem.

In addition, newcomers receive the friendly aid of other students under a program developed by the Campus Government Association.



*A view of the Courtyard*





*of the Classroom Unit.*



*Wide Variety of Sports Offered*

## *Health and Recreation*

Health education is considered to be of great importance at Texas Woman's University. The annual health examination is given shortly after the first semester opens through the cooperative efforts of the hospital staff, the faculty of the College of Health, Physical Education and Recreation, and Speech Therapy. The health record received from the student's family physician is examined and each girl has posture, height-weight, vision, and hearing tests.

Each student's health examination results in a classification which permits participation ranging from vigorous physical activities to adapted activities including corrective physical education for postural and other functional disorders and supervised rest.

The College of Health, Physical Education and Recreation provides pre-professional and professional training for leadership in these fields as well as promoting the health and physical development of each student. Emphasis is placed on activities which a girl can enjoy later. Dancing, golfing, swimming, canoeing, tennis, hockey, archery, riflery, and camping are among the many sports.



*Friends Visit Your Dormitory Room*

## *Residence Halls*

The University dormitories are modern and comfortable, and the meals, prepared in the central dining hall, a city block square, are excellent. The dining unit is completely air-conditioned.

Freshman and sophomore residence halls are along Dorm Row, just across a driveway to the north from the dining unit. Housing is available for mature and graduate students.

Junior and senior halls and the Cooperative System are to the east.

All are near the class and activity buildings.

Student rooms are most comfortable. All of the rooms are outside rooms, well lighted and properly ventilated, furnished with two individual beds, dressers or built-in units, study desks, chairs, and adequate closet space. Steam heat is used throughout. The handbook, *Campus Life*, gives full details concerning room furnishings.

There are attractive parlors which provide a hospitable setting for the reception of friends and guests by individual students and for informal social events.

The residence halls have the pleasant atmosphere of a gracious home.



## Student Organizations

The Campus Government Association maintains a democratic way of life on the campus and enlists the cooperation of all students in a constructive approach to student affairs. Each student is a member of this association and helps elect its officers.

The other campus-wide organizations also are all-inclusive. They are the Round Table, Student Council of Religious Activities, Student Council of Social Activities, Student Finance Council, and Women's Recreation Association.

In addition, all students participate in departmental, regional, and special-interest clubs. Literary-social clubs and national honorary and professional fraternities and societies in practically all departments are other important adjuncts to the student's extra-curricular life.

The campus wide program of activities offers unusual opportunities for individual effectiveness.

Texas Woman's University has the following regular publications: *The Daily Lass-O*, student newspaper; *The Daedalian Annual*, a 368-page treasure book of memories of each year; *The Daedalian Quarterly*, literary publication of special merit; *The Freshman Writer*, devoted to literary works of first-year students; and *Campus Life*, handbook for new students.

### *Members of Typical Literary-Social Club*







*Students and Dates Dance in Student Union Ballroom;  
Big Name Orchestras Are Engaged*

## *Social Life*

The social program is planned to provide full participation for every student.

Informal social life plays an important role, and the classes, literary-social clubs and special events provide dances, receptions, formal and informal teas, and other varied activities.

There is additional wholesome recreation in the varied campus activities, convocations, lectures, and art, music, and dramatic events, with students often taking leading parts. The University also presents an outstanding Concert and Drama series each year, one that is justly famed throughout the area.


The students enjoy their leisure time, and dating rules are those of the normal home. Students' dates are welcomed on the campus and large numbers of men students from Texas A&M and neighboring institutions visit the campus throughout the year. Any student may bring her auto to the campus.

## *Spiritual Life*

The religious program is an important part of the University life.

The Student Council of Religious Activities promotes a spiritual life on the campus through two weekly programs: vespers every Friday night in each dormitory and Sunday morning services in the Little Chapel-in-the-Woods. An additional activity is the annual Religious Emphasis Week.

The Religious program also works closely with the churches of



*Little Chapel-in-the-Woods*

Denton, all denominations giving the students much opportunity to take part in their activities.

## *Costs Are Low*

Charges for a full school year at this distinguished university are very moderate.

The total is only \$658.00 for the nine months' session (two complete semesters). This includes your room in the Regular Dormitory System and meals in the Central Dining Hall, tuition, and medical, activity, and linen fees. The University furnishes your textbooks (which would cost approximately \$60.00) without added charge. A season ticket to all Concert and Drama Series programs is included. The linen fee includes laundering of bed linens (which are furnished by the University) of students in the Regular Dormitory System.

Girls who need very much to economize may apply for

residence in the Cooperative System, where room and board is available at a substantially lower rate.

Note: By Texas law, out-of-state girls pay an additional \$150.00 tuition each semester of the 1959-60 long session. This sum is payable at registration. The total for full-time out-of-state and foreign students is approximately \$958.00 for the nine months' session.

Note: The *General Catalogue* and the *Careers for Women* bulletin list more details, including the plan of paying by four installments each semester.

---

### CLIP AND MAIL THIS COUPON

Mr. Francis W. Emerson, Dean of Admissions-Registrar  
Texas Woman's University  
Drawer A; University Hill Station  
Denton, Texas

☐ I am interested in the following study course:

---

(Ask the Director or Dean to send me further information.)

- ☐ Please send Application for Admission.  
☐ Please send *General Catalogue*.  
☐ Please send *Careers for Women* bulletin.

Other information: Please state\_\_\_\_\_

---

I will be a graduate of\_\_\_\_\_

High School on\_\_\_\_\_

Name in Full\_\_\_\_\_

(Please Print)

Address \_\_\_\_\_

City, State\_\_\_\_\_

Date\_\_\_\_\_

# *Texas Woman's University Offers Unexcelled Career Opportunities in These Areas:*

|                              |                                  |
|------------------------------|----------------------------------|
| Advertising Design           | Journalism: News-Editorial       |
| Art                          | Journalism: Radio-TV             |
| Art Education                | Kindergarten-Primary             |
| Biological Sciences          | Education                        |
| Biology                      | Latin-American Studies           |
| Botany                       | Library Science                  |
| Business Education           | Mathematics                      |
| Ceramics                     | Medical Technology               |
| Chemistry                    | Merchandising                    |
| Chemical Librarian, Chemical | Music Education                  |
| Secretary or Laboratory      | Music Therapy                    |
| Assistant in Chemistry       | Nursing                          |
| Child Development and        | Occupational Therapy             |
| Nursery Education            | Organ                            |
| Clothing and Costume Design  | Painting                         |
| Clothing and Textiles        | Philosophy                       |
| Costume Design and           | Photography                      |
| Fashion Illustration         | Physics                          |
| Counseling and Guidance      | Piano                            |
| Education                    | Pre-Medicine                     |
| Dance                        | Psychology                       |
| Drama-Interpretation         | Recreation                       |
| Economics                    | Recreational Therapy             |
| Education for the Deaf       | Sculpture                        |
| Elementary Education         | Secondary Education              |
| English                      | Secretarial Administration       |
| Foods and Nutrition          | Sociology: Human Relations       |
| Foreign Trade                | in Industry                      |
| French                       | Sociology: Religious Education   |
| General Business             | and Church Service               |
| General Education            | Sociology: Social Welfare        |
| General Music                | Sociology: Social Work           |
| General Science              | Sociology: Teaching of Sociology |
| General Sociology            | or Social Science                |
| Government                   | Spanish                          |
| Health, Physical Education,  | Special Education                |
| Recreation                   | Special Education for the        |
| History                      | Physically Handicapped           |
| History of Art               | Special Education for the        |
| Home and Family Life         | Mentally Retarded                |
| Home Demonstration and       | Speech                           |
| Home Economics Education     | Speech Education                 |
| (Vocational Home             | Speech: Radio-TV-Journalism      |
| Economics)                   | Speech Therapy (Speech           |
| Home Economics-Journalism    | Correction)                      |
| Institution Management       | Supervision                      |
| Instrumental Music Education | Violin                           |
| Interior Design              | Violoncello                      |
| Jewelry and Metalwork        | Voice                            |
| Journalism: Advertising      | Zoology                          |

