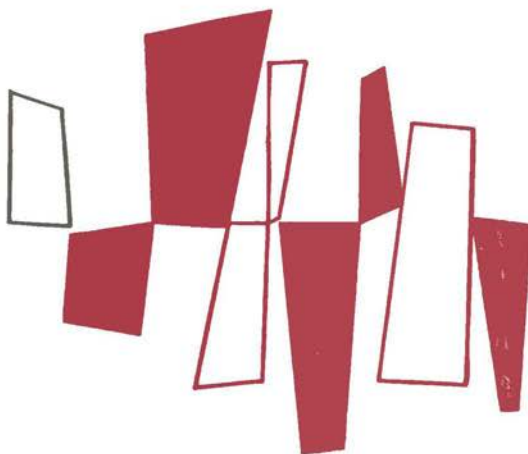


COLLEGE BULLETIN

SUMMER
1955



TEXAS STATE COLLEGE FOR WOMEN - DENTON

TABLE OF CONTENTS

ADMISSION	Page 5	DEGREE REQUIREMENTS	Page 6
ADVANTAGES OF SUMMER SCHOOL AT TSCW	Page 12	GRADUATE SCHOOL	Page 6
AMOUNT OF WORK	Page 6	RECREATION	Page 10
COLLEGE FACILITIES	Page 7	REGISTRATION	Page 5
COLLEGE SERVICES	Page 9	SUMMER SCHOOL EXPENSES	Page 30
CONCENTRATED COURSES	Page 13	WORKSHOPS	Page 13
COURSE SCHEDULE	Page 20		

COLLEGE BULLETIN

Number 464

January 15, 1955

Published by the Texas State College for Women, Denton, Texas. Issued semi-monthly. Entered December 17, 1917, at the post office at Denton, as second class matter under Act of Congress of August 24, 1912.

The Pub—Refreshments, Talk and Relaxation



TEXAS STATE COLLEGE FOR WOMEN

Board of Regents

CARL RUNGE, San Angelo, Chairman
REAGAN HOUSTON III, San Antonio, Vice-Chairman
MRS. ARTHUR F. DIETERICH, Dorchester, Secretary
MRS. CHARLES F. ASHCROFT, Sulphur Springs
R. H. COFFEE, Vernon
MRS. EDGAR DEEN, Fort Worth
J. T. JOLLEY, Clarksville
MRS. JOHN T. JONES, Jr., Houston
D. M. POLLARD, Beaumont

Officers of Administration

JOHN A. GUINN, Ph.D., President
VERNON L. WHARTON, Ph.D., Dean of the College,
Dean of the Graduate School
MARY HUFFORD, Ph.D., Dean of Women
FRANCIS W. EMERSON, M.A., Dean of Admissions, Registrar
PAULINE BEERY MACK, Ph.D., Dean and Director of Research, College
of Household Arts and Sciences
IVAN L. SCHULZE, Ph.D., College Librarian
L. L. LaRUE, B.B.A., Comptroller
FRANK D. FULLER, Business Manager
GERALDINE SHIRLEY, M.D., College Physician

Accreditation and Approval

Texas State College for Women is fully accredited by all appropriate agencies, including the Southern Association of Colleges and Secondary Schools and the Association of Texas Colleges. This general accreditation is a recognition of the quality of all of the departments of the College. In turn, the excellence of the work done by these departments forms the basis for numerous memberships held by the College in selective associations and societies which recognize and demand high standards in specific fields.

SUMMER CALENDAR

FIRST TERM

Registration, Monday, 8:00 a. m.	June 6
Classes begin, Tuesday	June 7
Last day for August Graduates to file Senior, Master's and Doctoral Programs	June 9
Last day to add a course, Tuesday	June 14
Last day to drop a course without failing grade	June 21
Turn in Gradebooks	June 24
Blue Slips due from Faculty, Tuesday	June 28
Application for diplomas and teaching certificates for August Graduates	June 27-29
Holidays	July 2-4
Examinations, Thursday and Friday	July 14-15

SECOND TERM

Registration, Monday, 8:00 a.m. to 12 noon	July 18
Classes begin, Tuesday.....	July 19
Last day to add a course, Tuesday	July 26
Turn in Gradebooks	July 26
Last day to drop a course without failing grade	August 2
Blue Slips due from Faculty, Tuesday	August 9
Classes to be held, Saturday	August 20
Examinations, Tuesday and Wednesday	August 23-24
President's Reception honoring Graduates	August 25
Summer Commencement, 9:00 a.m.	August 26

GENERAL INFORMATION

ADMISSION

Requirements for admission to the Summer Session are the same as those for admission to the Regular Session. Graduates of accredited high schools who present fifteen accredited units chosen from the groups outlined in the regular catalogue are admitted unconditionally; others may be admitted by entrance examinations or conditionally if the high school work does not include all the required courses. Students twenty-one years of age or over may be admitted on individual approval.

Students who plan to enter the College for the first time should consult the Registrar's Office either by mail or by personal interview, presenting for evaluation an official transcript of work done in high school or other colleges.

For details in regard to admission requirements consult the regular catalogue.

REGISTRATION

Registration for the first term will be held Monday, June 6, in Hubbard Hall, South Side, beginning at 8 a.m.

1. Students who did not attend TSCW in 1954-55.

These students must call at the Office of the Dean of Admissions-Registrar, Room 211, Administration Building, for a registration permit before reporting to Hubbard Hall. After receiving the permit, the student will report according to the schedule listed below.

2. Students who attended TSCW in 1954-55.

These students will report directly to Hubbard Hall according to the schedule listed below.

According to First Letter of Last Name:

8:00 a.m. S, X, Y, Z	11:30 a.m. C, F, P
8:30 a.m. B	1:30 p.m. R
9:00 a.m. N, O, T	2:00 p.m. D, E, V
9:30 a.m. I, J, K, Q	2:30 p.m. H
10:00 a.m. M, U	3:00 p.m. A, G
10:30 a.m. L, Mc	3:30 p.m. Those unable to re-
11:00 a.m. W	port according to schedule.

Registration for the second term will be held Monday, July 18, in Hubbard Hall, South Side, beginning at 8 a.m.

1. Students who did not attend TSCW the first summer term.

These students must call at the Office of the Dean of Admissions-Registrar, Room 211, Administration Building, for a registration permit before reporting to Hubbard Hall. After receiving the permit, the student will report according to the schedule listed below.

2. Students who were enrolled the first summer term of 1955.

These students report directly to Hubbard Hall according to the schedule listed below.

According to First Letter of Last Name:

8:00 a.m. A, G	11:30 a.m. M, U
8:30 a.m. H	1:30 p.m. I, J, K, Q
9:00 a.m. D, E, V	2:00 p.m. N, O, T
9:30 a.m. R	2:30 p.m. B
10:00 a.m. C, F, P	3:00 p.m. S, X, Y, Z
10:30 a.m. L, Mc	3:30 p.m. Those unable to report according to schedule.
11:00 a.m. W	

AMOUNT OF WORK

The normal student load is six semester hours for each six-week term. On work taken for graduate credit, the six hours in each term is an absolute maximum.

By permission, an undergraduate of proved ability may take a maximum of eight hours in one term, and of fourteen hours in the two terms. In unusual circumstances, a senior who has a superior record, and who is graduating at the end of the summer session, may take a maximum of fifteen hours in the two terms.

DEGREE REQUIREMENTS

Degree requirements are explained fully in the regular college catalogue. Courses required conform to recognized college standards, based on sufficient specialization balanced with electives. Completion of an approved sequence of courses with grades high enough to meet the grade point requirements entitles a student to a degree.

GRADUATE SCHOOL

Admission to graduate study is granted, after approval of records by the Dean of Admissions and the Dean of the Graduate School, to applicants who hold a bachelor's degree from TSCW or another college of approved standing. Seniors, enrolled as regular undergraduate students, who do not need to carry a full program of undergraduate courses for graduation, may, with permission of the Dean, register for work in the Graduate School.

For graduates, TSCW offers summer courses in the following colleges or departments:

Art	History and Government
Business and Economics	Household Arts and Sciences
Chemistry	Library Science
Education (including Special	Mathematics
Education, Supervision, and	Music
Counseling)	Psychology
English	Sociology
Health, Physical Education,	Speech
and Recreation	

Minor work ordinarily must be done in a closely related field of study. For full details concerning requirements for the master's degree, write the Registrar for the catalogue of the Graduate School.

FACILITIES OF THE COLLEGE

TSCW'S IDEAL RESIDENTIAL LIFE

Residential life at TSCW is planned to meet the needs and promote the happiness and development of the modern college girl. Students reside in attractive brick dormitories, fireproof and well equipped, in which living arrangements are convenient and inviting. A simple but constructive social program supplements scholastic activities.

Smith-Carroll Hall has been air-conditioned throughout all bedrooms and lounges. This special provision for summer comfort is available to students of all classifications for a small additional fee.

Special dormitories are set aside for TSCW's large group of graduate and mature students. Comfortable accommodations, proximity to the dining hall, and congenial associations invite busy women to pursue summer study.

Mothers accompanied by young sons or daughters may find accommodations in houses especially provided for their use. For the children the College offers the services of its excellent Demonstration and Nursery Schools, individual instruction in music and dance, and such recreational activities as movies and swimming. Mothers enthusiastically endorse this children's program which includes all of the advantages of a summer camp.

The College furnishes bed linens to students in the regular dormitory system, but all students must furnish their own towels.

Several college-owned apartments are available to students with families or to graduate students who prefer an apartment to a dormitory room.

Students dine in the air-conditioned comfort of dining rooms and cafeteria in beautiful Hubbard Hall. Meals with distinguished campus guests and frequent visits of professional groups add zest to mealtime.

For students who must have less expensive living arrangements than those of the regular dormitory system, the College provides the Rusk System (cooperative). In the small, friendly dormitories of this system students do their own cooking and housework in an atmosphere of friendly teamwork and cooperation. Students living in the Rusk System must furnish all their linens and towels.

IMPRESSIVE INSTRUCTIONAL BUILDINGS

Classroom buildings are conveniently located on the two-hundred-acre campus. Built to care for the specific needs of the departments for which they were designed, these buildings include the Administration Building, the Science Building, the Music and Speech Building, the Fine Arts Building, the Rural Arts Building, the Journalism Building, the Union Building, the Gymnasium, and the Library. The air-conditioned Reserve Reading Room of the Library affords a comfortable place for study and reading from 7 a.m.-10 p.m., Monday-Friday; 7 a.m.-4:30 p.m., Saturday; 2-5 p.m., Sunday afternoon (during the first Summer Term). The new building of the College of Household Arts and Sciences, which has attracted national

attention by its wonderful facilities, opens to the student every avenue for study in the field and offers, in addition, the comfort of air-conditioned lounges and (beginning in the summer of 1955) various air-conditioned classrooms.

A building program now in progress will provide four more structures with the most modern facilities: an air-conditioned Classroom Building, a Gymnasium to supplement the present building, a Library Science Building, and an Administration Building. These additions are scheduled to be ready for use by February, 1956.

DEMONSTRATION SCHOOL

A modern and well-equipped Demonstration School on the TSCW campus provides supervised experience for students who plan to teach kindergarten, first, second, third, fourth, fifth, or sixth year classes. It is open during the first six weeks of the summer session. The program consists of regular classroom instruction, health examinations, art, music, story-telling, Spanish, visual aids including television, supervised library periods, swimming, woodwork, and camping.

Children of summer school college students and local children will be received at the level on which they were classified during the winter, since summer classes are planned as a continuation of the work of the previous term. Teachers attending the first half of the summer session will have the opportunity to observe these various activities, since the Demonstration School serves as a laboratory.

LIBRARY

Bralley Memorial Library, built in 1925 and enlarged in 1946, is centrally located among the instructional buildings on the campus. The student will find its diversified collection of 122,000 books and bound magazines, 70,000 government documents, more than 875 current magazines and newspapers, vertical file materials, publications on microcards and microfilm, including a complete microfilm file of the New York Times, adequate in every respect. Reading rooms, study alcoves, and carrells for graduate students provide comfortable areas for reading and study. Microfilm and microcard reading machines offer excellent opportunities to students to become acquainted with their use in study and research.

Much of the book collection is directly at hand on open shelves. All bound magazines are in an open stack room furnished with well-lighted study tables near the stacks. Current magazines are on open shelves in the main reading room. An open shelf library of some 14,000 volumes in all fields of study and general reading is arranged in alcoves on the mezzanine of the same room. All books in the reserve reading room are also on open shelves. This open shelf arrangement of large amounts of material throughout the Library affords opportunity for extensive browsing and eliminates delay in securing desired books.

The Library is the central workshop of all academic departments in the College. Library staff and faculty plan constantly to coordinate library services with classroom instruction. This combination provides for the student an integrated library-instructional program that affords her the fullest benefits in her college work.

SERVICES OF THE COLLEGE

HEALTH SERVICE

The College Health Service is maintained for the benefit of the students. When ill, students are required to report promptly to the College Hospital. Students are not permitted to care for each other. Notification of parents of a student's illness is to be done by college officials. Town physicians may not be called to a dormitory room.

In some cases of minor indisposition, a student may secure from the college physician permission to remain in her room during a specified period.

Student fees provide hospitalization for seven days per semester or summer session (not cumulative). After this period there is a charge of \$3.00 for each additional day. Charges for special nurses and services are also extra.

PLACEMENT AND GUIDANCE SERVICES

The College has established a guidance program which is designed to aid students who need help in making decisions and adjustments.

The primary objectives of this program are:

1. To provide vocational information and testing services.
2. To help students with study problems.
3. To advise students who are having difficulty in making personal, social, and emotional adjustments.

All summer school students who are post-graduates, or candidates for a bachelor's or master's degree are eligible to register with the Placement and Guidance Office. For those who have positions and, therefore, do not anticipate the immediate need for recommendations, data for references given will be collected to be held in the office for future use. When registrants wish to change jobs, information on better positions in the same field or other fields will be available.

Those desiring positions receive notifications of job opportunities and are able to see and talk to all employing agents that come to the campus.

The Placement and Guidance Office is located in Room 218 of the Administration Building.

SPEECH AND HEARING CLINIC

The services of a Speech and Hearing Clinic are available to persons of all ages who are in need of help with speech problems or hearing deficiencies. Corrective work is under the direction of experienced therapists. Hearing tests will be given to anyone interested in having an audiometric evaluation of hearing acuity. Appointments for those tests or for conferences regarding speech and hearing problems may be made in Room 119 of the Music-Speech Building.

EXTENSION SERVICES

In order to make an additional contribution to the social, civic, and community life of the people of Texas, TSCW maintains a Department of Extension. The College is interested in the problems of the

day, and its aim is to help promote every forward-looking movement which serves the interest of the state. The College believes that, so far as resources and facilities permit, its services should be available beyond the limits of the campus.

The Extension Service makes available cultural programs and informational material through lectures and demonstrations by college faculty members and through various types of publications. More detailed information may be obtained by writing to the Department of Extension, Box D, TSCW.

LOAN FUNDS

Aided by many gifts from interested friends, ranging from \$1 to the \$50,000 presented by the estate of Will Hogg of Houston, the College has loan funds available to students who need financial assistance. These loans are available to both freshman and upper-class students.

To be eligible for a loan an applicant must present evidence of an acceptable scholastic and disciplinary record. Student loans are intended to be used in meeting college charges for tuition, room, and board, and may not exceed \$550 for a single long session or a total of \$1,100.00 in all to any one student. Loans are usually made for a term of two years, but may be extended by permission of the College. On most loans a moderate rate of interest of 3 per cent is charged. Hundreds of girls have used these loans to continue their college work.

Requests for further information about loans and applications for loans should be made to the Secretary, Loan Fund Office, Box 2906, TSCW Station, Denton, Texas.

INVITING RECREATION FOR ALL TASTES AT TSCW

Recreational facilities at TSCW are available to the summer student in inviting variety.

"The Pub" offers quick relaxation in the friendly atmosphere of its recreation room and soda-fountain service. Television, automatic record player, table games, fountain service, and space for dancing make the Union Building's recreation room a popular spot. The shady terrace back of the UB invites students to sociability in the off-duty hours.

The large outdoor swimming pool, 150x50 feet, is the scene of a gay and colorful crowd and of skilled aquatic performance. All-weather and clay tennis courts and an 18-hole golf course are favorites with active sportswomen and their friends. Near the beautiful greens of the golf course stands the golf clubhouse, a haven for picnicking groups as well as for sportsmen.

Lake Dallas offers opportunities for camping, water sports, and picnicking. The College's own 20-acre campsite has three cabins for the accommodation of outing groups, and its powerful speedboat adds delight to the usual pleasures of picnickers. College trucks furnish transportation between the campus and the lake.

Also available is TSCW's new camp at Lake Texoma. A camp house, boats and a boat house, and good beaches provide equipment

for the numerous college groups who go there for outings.

Lectures, recitals, concerts, and parties are arranged for students of the summer session free of charge or at a very small cost. Motion pictures, presented in the outdoor theater each Tuesday and Friday at 8:00 p.m., with only a small admission charge, are always popular.

Various departments of the College sponsor exhibits, lectures by visiting notables, and demonstrations. The Art Department, for example, features fine showings of primitive arts, prints, jewelry, ceramics, painting, and photography.

The College organizes week-end trips in college buses to Dallas and Fort Worth, enabling students to enjoy these metropolitan centers, with their museums, theaters, stores, galleries, libraries, welfare projects, and the celebrated summer operettas.



Informal Fun in the "UB" Recreation Room



ADVANTAGES OF SUMMER SCHOOL AT TSCW

**For the New High School Graduate
And For Students Already in College**

Many high school graduates will gain important advantages by beginning their careers at TSCW in the summer session. Some, concerned about the transition from high school to college studies, will use summer-school credits to allow lighter work during their freshman year. Others will use summer school to repair weaknesses in academic background, or to enrich their training through courses which, otherwise, they would be unable to take. Some, aspiring to leadership in student affairs, will gain extra time for such important activities by summer attendance.

In a time of rising standards of proficiency, and of rapidly increasing requirements for training in all lines of work, purposeful college students doubt the wisdom of "loafing" through their summers. At TSCW, they may gain twelve to fourteen hours of college credits, and enjoy a healthful recreational program. The financial cost is often considerably less than that of a do-nothing summer at home.

CONCENTRATED COURSES

To meet the needs of certain advanced students in the summer session, including those who attend a Workshop for a portion of a six-weeks period, some departments of the College are offering concentrated courses. In these concentrated courses by devoting her attention to one course, the student can complete a regular summer course within three weeks. Concentrated courses are listed on the summer schedule (see page 21), with a statement of their inclusive dates.

Registration for courses offered the first three weeks of a summer term will be held on the regular day of registration for the term. Registration for courses offered the second three weeks of a summer term will be held on the regular day of registration for the term, beginning of the term or at the Office of the Registrar on June 27 or August 8.

WORKSHOPS

REGISTRATION

1. Students who wish to live in the college dormitories may facilitate their registration by writing for room reservations in advance. Reservations should be made through the Office of the Registrar, Texas State College for Women.
2. Registration for Workshops beginning on June 6 and July 18 will be held in Hubbard Hall, 8 a.m.-4 p.m. Registration for the School Lunch Workshop will be held at the time and place given in the workshop description.
Registration for all other Workshops will begin at the time and place given in the workshop description and will be completed in the Office of the Registrar. For the cost of attending Workshops see Summer School Expenses, page 31.
3. Workshops whose registration is held on June 6 and July 18 will meet for the first time on June 7 and July 19 respectively. All other Workshops will meet for the first time on the day of registration.

CHECKING OUT

1. Return library books to the Library not later than noon of the day before checking out.
2. Return textbooks to the College Book Store (Brackenridge Hall) not later than the day before checking out.
3. Turn in linen and keys at the dormitory.
4. Following compliance with 1, 2, 3 above, students will receive room assurance fee refunds by mail.

ART

ART EDUCATION WORKSHOP FOR THE CLASSROOM TEACHER
who has not had special art training, June 27-July 15. Registration begins

in Room 201, Fine Arts Building, June 27, at 8 a.m. Three hours graduate credit.

Emphasis on the meaning and function of the creative arts in the elementary school curriculum. This Workshop is designed primarily for the general classroom teacher who teaches art and who has not been an art major. Art majors may be admitted upon consideration of each individual's need.

Seminars, demonstrations, experimentations with a variety of materials suitable for the elementary school.

For additional information write Professor Kenneth B. Loomis, Director, Art Department.

ENGLISH

ENGLISH WORKSHOP ON CURRENT TRENDS IN ENGLISH, June 6-July 15. From one hour to six hours graduate credit, according to the amount of time spent in the program. For teachers who wish to work on their problems in teaching and to share their experiences with other teachers. Registration may be for one week or two weeks, three weeks, four weeks, five weeks, six weeks.

The English Workshop integrates elementary, high school, junior college, and senior college English instruction.

The program presents the latest information about nation-wide trends pertaining to the English curriculum; lectures, conferences, and seminars; changing points of view; the latest books and techniques; the coordination of levels of instruction; guidance; visual and auditory aids; problems in reading with laboratory experience in methods and the use of equipment; lecturers and consultants active in national and regional organizations and lately returned from study and travel in this country, in England, and on the European Continent.

Lectures, laboratory work, reports, panels, and informal group discussions are held daily.

Write Professor Autrey Nell Wiley, Director, Department of English, if you wish to suggest topics for the program or to secure additional information.

TRAVELING ENGLISH WORKSHOP: A LITERARY TOUR OF THE UNITED STATES, June 6-July 15. Six hours advanced or graduate credit.

This program begins with lectures on the campus from June 6 to June 11. The tour beginning June 12 will give students valuable experiences which will vitalize their future work in the classroom. According to demand, there will be a conducted tour by air-conditioned bus eastward and a conducted tour by air-conditioned bus westward.

For information concerning schedules and expenses, address the Director of the English Department, Dr. Autrey Nell Wiley, Box 3835, TSCW Station.

HEALTH, PHYSICAL EDUCATION, AND RECREATION

WORKSHOP IN TEACHING AND DIRECTING SYNCHRONIZED SWIMMING, June 6-24. One to three hours undergraduate or graduate credit.

The Synchronized Swimming Workshop is planned for women and

men teachers and coaches of swimming and/or synchronized swimming.

The Workshop is directed by Evelyn K. Dillon, Associate Professor of the College of Health, Physical Education, and Recreation at the Texas State College for Women. Doctor Dillon is assisted by Lois Timmins, Assistant Professor. Consultants contributing to the Workshop include staff members at the Texas State College for Women and members of the Southwestern Amateur Athletic Union Synchronized Swimming Committee.

The Workshop is planned to meet the needs and interests of the enrollees. Laboratory sessions will include practice in the fundamental synchronized swimming skills and practice in teaching these skills to the accompaniment of music. Discussions and demonstrations include all phases of water show production. Workshop experience will provide opportunity for participants to share in the planning and execution of a synchronized swimming production.

For additional information write to Professor Anne Schley Duggan, Director, College of Health, Physical Education, and Recreation, Box 2666, TSCW Station.

WORKSHOP IN TWIRLING, DRILL TEAMS, AND CHEER LEADERS, June 27-July 15. Registration begins in Gymnasium, June 27, from 10-12 a.m. Three hours undergraduate or graduate credit.

This Workshop is planned for women; elementary, junior and senior high school directors, assistant directors, sponsors, and prospective directors or sponsors of these organizations or groups.

The Workshop is directed by Bertie Hammond, Assistant Professor of the College of Health, Physical Education, and Recreation at the Texas State College for Women. Consultants contributing to the Workshop include staff members at the Texas State College for Women and guest sponsors, advisors, and directors whose groups have distinguished records throughout the Southwest.

The Workshop is planned to meet the needs, interests, and experiences of students, teachers, directors, and sponsors of drill teams, baton twirlers, and cheer leaders. It will include theory, practice, and coordination of such activities. Special attention is to be given to field presentation, specific program numbers, and routines.

For additional information write to Professor Anne Schley Duggan, Director, College of Health, Physical Education, and Recreation, Box 2666, TSCW Station.

HOUSEHOLD ARTS AND SCIENCES

HOME DEMONSTRATION TAILORING WORKSHOP, July 11-29. Three hours graduate credit.

This Workshop is sponsored jointly by the College of Household Arts and Sciences and the Texas Extension Service of the Texas Agricultural and Mechanical College System. Designed to meet the needs of extension personnel, registration is limited to selected Home Demonstration Agents. The various techniques of tailoring usable in the extension field are studied. Lectures, demonstrations, and laboratory construction will be the main features of the Workshop.

HOME ECONOMICS EDUCATION WORKSHOP SERIES

June 20-July 9; July 18-August 6

Six distinctive one-week Workshops involving subject matter and the newer methods of incorporating this subject matter into home economics teaching programs will be offered in the order given below.

Registration begins in Room 108, College of Household Arts and Sciences at 8 a.m. at the beginning of each unit of the Workshop for those who do not sign for this Workshop at the regular Summer Registration. One to six hours of graduate credit may be obtained for these Workshops.

This workshop series is planned for secondary, college, and university teachers, as well as Home Demonstration personnel and others. It is designed to emphasize new subject matter and new methods of teaching home-making, and of bringing teachers and others up to date in the several subject matter areas.

RAPID FOOD PREPARATION METHODS WORKSHOP, June 20-25.

The Julia Kiene Method of Rapid Food Preparation will be demonstrated, together with actual laboratory participation in food preparation techniques by workshop members. Time and motion records will be made on conventional and rapid food preparation methods. Julia Kiene will be in charge of the subject matter portion of this unit.

MODERN NUTRITION WORKSHOP, July 5-9.

The modern trends in human nutrition will be stressed, with demonstrations including the methods by which experimental animals may be used in teaching nutrition. Opportunities will be afforded the group to see how assessments in nutrition status of human beings are made in the newly-equipped Nelda Childers Stark Laboratory for Human Nutrition Research in the College of Household Arts and Sciences at TSCW.

HOUSEHOLD EQUIPMENT WORKSHOP, June 27-July 2.

Methods of using modern household equipment will be demonstrated, together with actual laboratory participation by workshop members. Household equipment considered in the program will include primary and auxiliary cooking equipment, refrigerators, freezing units, laundry equipment, driers, and household heating and air conditioning equipment. The subject matter part of this unit will be under the direction of experts in the utility field.

TEXTILE WORKSHOP, July 18-July 23.

The Textile Workshop is intended to bring the participants up to date on the characteristics of the new synthetic fibers and finishes and the types of fabrics made therefrom. Special consideration will be given to the utilization of these fibers and fabrics and their cleansing, from the consumer's point of view.

RAPID CLOTHING CONSTRUCTION WORKSHOP, July 25-July 30.

The newer rapid methods for the construction of garments will be demonstrated. Participants in the Workshop will construct garments for themselves according to the newer speed sewing techniques.

CLOTHING AND COSTUME DESIGN WORKSHOP, August 1-August

6.

Further work on rapid methods of clothing construction will be done,

with a study of the theoretical principles of these methods. Also, the principles and practices of clothing and costume design will be studied, as well as those of fitting and alteration.

NURSERY EDUCATION WORKSHOP. Registration begins in Room 108, College of Household Arts and Sciences, at 8 a.m. on the opening date of each Unit.

A one-week Workshop on nursery education and development of the pre-school child will be repeated three times at the dates given below to make it possible for more than one person of the same nursery school or day nursery to attend. The Workshop will include discussions and demonstrations on the selection and use of large and small equipment for the pre-school child, and on the general conduct of the nursery school. The dates of the Workshops follow: Unit (1) June 13-June 18; Unit (2) June 20-June 25; Unit (3) June 27-July 2.

RESOURCE AND ILLUSTRATIVE MATERIAL WORKSHOP. Registration begins in Room 108, College of Household Arts and Sciences, at 8 a.m. on the opening date of each Unit.

Three one-week Workshops on resources for home economics teaching and on the selection and preparation of illustrative materials for the family living program in its several aspects have been designed to assist the teacher to recognize local resource material and to analyze, choose, select, and make illustrative material of extreme usefulness in secondary, college, and university homemaking programs. The three Units of this Workshop are as follows:

Unit (1) Resource and Illustrative Material for Family Living and Child Development Courses, June 6-June 11.

Unit (2) Resource and Illustrative Material for Textiles, Clothing, and Grooming Courses, June 13-June 18.

Unit (3) Resource and Illustrative Material for Foods and Nutrition Courses, July 11-July 16.

SCHOOL LUNCH WORKSHOP, July 5-9. Registration in Room 108, College of Household Arts and Sciences, July 5 at 8 a.m. One hour credit

The Workshop is designed to serve two groups of people: (1) workers in school lunchrooms who are not interested in college credit, and (2) school lunchroom supervisors, and teachers who would like to earn one hour of undergraduate or graduate credit. School superintendents and principals especially are urged to attend. Problems of nutrition, work organization, equipment, surplus commodities, sanitation, and other subjects which may be of interest to the group will be discussed. Special emphasis will be placed on meal planning, preparation, and the detection of nutritional deficiencies in children.

The Workshop is under the joint direction of the College of Household Arts and Sciences and the Texas Education Agency.

MATHEMATICS

MATHEMATICS WORKSHOP, on current trends in teaching mathematics in junior and senior high school, June 6-24. Three hours graduate credit in Mathematics or Education. Prerequisite, graduate standing.

The Workshop will feature lectures, demonstrations of interest-arous-

ing materials and teaching aids, classroom demonstrations, and opportunities for the exchange of ideas. Information on free and inexpensive materials will be available.

A laboratory will be conducted for those who are interested in constructing teaching aids. Those who participate in this activity will share the cost of materials.

Groups will be organized to work on topics of interest to members of the Workshop. Individual projects may be undertaken under the supervision of the Director.

The College Library contains much material of interest to mathematics teachers. Members of the Workshop will be given guidance in locating books and articles of interest and encouraged to use them.

Participants in the Workshop may be interested in the concentrated course which will be given June 27-July 15. The course will deal with historical material which is of special interest to teachers of junior and senior high school mathematics.

Write to Professor Harlan Miller, Director, Department of Mathematics, for more detailed information.

MUSIC

MUSIC THERAPY WORKSHOP, June 6-24. Three hours advanced or graduate credit. Counts as Music 430a, b, c, or d.

This Workshop is designed to offer a survey of basic principles and procedures underlying the use of music as a therapeutic agent. Consideration will be given to the psychological basis of therapy, special problems of rehabilitation, the team approach to therapeutic problems, and the adjunctive therapies. The Workshop will also be adjusted to meet the special needs of the students.

The Music Therapy Workshop will be open to majors in Music Therapy, Speech Therapy, Occupational Therapy, Recreation Administration, Recreational Therapy, Music Education, and Special Education.

PIANO METHODS WORKSHOP, June 6-July 15. One to six hours advanced or graduate credit. Counts as Music Education 430.

This Workshop will run continuously through the six weeks of the first term and may be entered at any time. One semester hour of credit will be given for each week of the Workshop and as many as six weeks may be taken. Six hours is the maximum credit. The Workshop will be devoted to such problems as repertoire, pedalling, interpretation, recital performance, and memorizing. Teachers and students alike are invited to attend the Workshop. The Workshop is approved by the National Guild of Piano Teachers.

Registrations for these Workshops must be submitted and approved by June 1. For information and registration write to: Dr. J. Wilgus Eberly, Director, Department of Music.

SPEECH

ARENA THEATER WORKSHOP, June 6-July 15. Three hours credit.

This Workshop will be held during the entire first six-weeks term. Special emphasis will be placed on Arena acting, staging, and directing.

Actual production and acting assignments in plays presented by the Children's Theater Workshop and the Contest-Drama Workshop. Open to any student with junior standing, or by special permission of the instructor.

CHILDREN'S THEATER WORKSHOP, June 6-24. Three hours advanced or graduate credit.

This Workshop will be presented in connection with the Arena Theater course for a period of three weeks. The course should be of special interest to teachers preparing plays with children or with adults for children. The classes will be held in the air-conditioned Hubbard Hall Arena Theater. A short children's play will be produced during the course. Admission is by permission of the director of the department.

CONTEST-DRAMA WORKSHOP, June 27-July 15. Three hours advanced or graduate credit.

This Workshop is offered for teachers in service or students planning to teach who are charged with the responsibilities of entering plays, or individual speech work in Interscholastic League or other competitive situations. Special emphasis will be placed on the choice of play, casting, and directing. A program of short plays will be presented in the air-conditioned Hubbard Hall theater. Admission is by permission of the director of the department.



Outdoor Summer Sports at TSCW

SCHEDULE OF COLLEGE COURSES

FIRST TERM, SUMMER SESSION, 1955

JUNE 6 TO JULY 15

Classes are held Monday through Friday as indicated below. When no letter appears before a classroom number, classroom is in the Administration Building. In other cases note the letter preceding the room number and use the following key to locate the classrooms: A—Art; D—Demonstration School; HA—College of Household Arts and Sciences; HR—Household Arts and Sciences Research Building; J—Journalism; L—Library; M—Music-Speech; NS—Nursery School; RA—Rural Arts; Sc—Science; UB—Union Building.

SUBJECT	DAY	HOURL	ROOM
---------	-----	-------	------

COLLEGE OF ARTS AND SCIENCES

DEPARTMENT OF BIOLOGY

Biology 131—Principles of Biology.	Lecture	Daily	10:00-11:00	Sc305
	Laboratory	Daily	11:00- 1:00	Sc308

DEPARTMENT OF BUSINESS AND ECONOMICS

Business 121—Fundamental Principles of Typewriting	Daily	11:30- 1:00	300
Business 111—Intermediate Typewriting	Daily	11:30- 1:00	300
Business 112—Intermediate Typewriting	Daily	11:30- 1:00	300
Business 212—Advanced Typewriting	Daily	11:30- 1:00	300
Business 113—Office Machines	Daily	2:00- 3:30	311
Business 114—Office Machines	Daily	2:00- 3:30	311
Business 115—Office Machines	Daily	2:00- 3:30	311
*Business 131—Shorthand—Theory, Dictation, and Transcription	Daily	7:00- 8:30	301
Business 235—Business Correspondence	Daily	10:00-11:30	301
Business 441—Work Experience	Daily	To be arranged	
Business 538—Seminar in Business	Daily	To be arranged	308
*Business 539—Research in Business	Daily	To be arranged	308
Business 541—Supervised Teaching of Business Subjects at College Level	Daily	To be arranged	
Economics 131—Principles of Economics	Daily	8:30-10:00	308
*Economics, Advanced; or Business, Advanced	Daily	7:00- 8:30	308
Business 630a, 630b—Thesis			
*According to demand			

DEPARTMENT OF CHEMISTRY AND PHYSICS

Physics 235—Elementary Physics	Lecture	Daily	7:00- 8:30	Sc104
Sec. 1	Laboratory	Daily	8:30-10:00	Sc102
Sec. 2	Laboratory	M&W	2:00- 5:00	Sc102
Chemistry 231—Organic	Lecture	Daily	10:00-11:00	Sc208
	Laboratory	Daily	11:00- 1:00	Sc204
Chemistry 442—Physiological	Lecture	Daily	7:00- 8:00	Sc208
	Laboratory	Daily	8:00-10:00	Sc203

DEPARTMENT OF ENGLISH

English 131-1—Composition and Literature	Daily	7:00- 8:30	400
English 131-2—Composition and Literature	Daily	8:30-10:00	400
English 231-1—Survey of English Literature	Daily	7:00- 8:30	401
English 231-2—Survey of English Literature	Daily	8:30-10:00	401
English 232—Survey of English Literature	Daily	10:00-11:30	400
English 233—Remedial English	Daily	7:00- 8:30	402

ADVANCED AND GRADUATE COURSES

English 433—Special studies in areas of particular interest in both English and American literature. If a student seeks six hours of credit, she will take the course as 433a and 433b by special arrange- ment with the professor in charge	Daily	8:30-10:00	403
Traveling English Workshop: A Literary Tour of the United States, June 6-July 15		9:30-12:30	
Lectures, June 6-11	Daily	2:00- 4:00	402
Tour, June 12-July 15			

GRADUATE AND PROFESSIONAL COURSES

English 533—Seminar. Special studies emanating from a central consideration of major principles in lit- erary criticism. Authors, types, and trends	Daily	10:00-11:30	403
English Workshops on Current Trends in English, June 6-July 15	Daily	8:30-12:30	402
English 530a.—Trends in the Teaching of English in High School			
English 530b.—Trends in the Teaching of English in the Elementary Grades			
English 534a.—Trends in the Teaching of English in College			
English 630a, 630b—Thesis	To be arranged		

DEPARTMENT OF HISTORY AND GOVERNMENT

Government 231—American Government and Citizenship.....	Daily	7:00- 8:30	312
Government 232—American Government and Citizenship.....	Daily	10:00-11:30	312
Government 333—Foreign Relations	Daily	8:30-10:00	312
History 133 —History of the United States, 1492-1865.....	Daily	8:30-10:00	418
History 134—History of the United States, after 1865.....	Daily	10:00-11:30	418
History 437—Political and Social Development of the United States, 1865-1900	Daily	7:00- 8:30	418
or			
History 336—Later Middle Ages	Daily	7:00- 8:30	418

DEPARTMENT OF LIBRARY SCIENCE

Library Science 333—Bibliography and Reference Materials	Daily	7:00- 8:30	L104
Library Science 430—Selection and Use of Library Materials	Daily	10:00-11:30	L104
Library Science 432—Library Materials for Children.....	Daily	7:00- 8:30	L105
Library Science 530b—Literature of the Sciences and Technology	Daily	8:30-10:00	L104
Library Science 531—Advanced Cataloging and Classifi- cation	Daily	10:00-11:30	L105
Library Science 533b—The College and University Library.....	Daily	11:30- 1:00	L104
Library Science 534—Library Work with Children and Young People	Daily	8:30-10:00	L105

Library Science 539a—Library Problems Seminar	To be arranged
Library Science 539b—Methods of Research	To be arranged
Library Science 630a&b—Thesis	To be arranged

DEPARTMENT OF MATHEMATICS

CONCENTRATED COURSE

June 27-July 15

Mathematics 536—History of Mathematics for the High School Teacher	Daily	8:30-11:30	212
---	-------	------------	-----

WORKSHOP

Mathematics Workshop	June 6-June 24	212
First meeting to be held in Room 212 Administration Building at 9 a. m. on June 6.		

DEPARTMENT OF SOCIOLOGY

Sociology 231—General Sociology	Daily	8:30-10:00	201
Sociology 331c—Sociometry for Guidance Workers or 331d—Sociometry for Elementary Teachers	Daily	11:30- 1:00	201

DEPARTMENT OF SPEECH

Speech 137 (or 131)—Speech for Teachers	Daily	7:00- 8:30	M228
Speech 232 (or 333)—Story Telling	Daily	10:00-11:30	M228
Speech 339c—Introduction to the Drama	Daily	8:30-10:00	M228
Radio 438—Radio Writing	Daily	8:30-10:00	M116
Speech 335—Arena Theater	Daily	10:00- 1:00	M116

WORKSHOPS

Children's Theater Workshop	June 6-24	M228
Contest-Drama Workshop	June 27-July 15	M228

COLLEGE OF EDUCATION

Education 131—Introduction to Education	Daily	10:00-11:30	108
Education 232—Secondary Methods	Daily	7:00- 8:30	103
Education 331a—Educational Guidance and Educational Adjustment	Daily	8:30-10:00	100
Education 334—Adolescent Psychology	Daily	10:00-11:30	100
Education 335a—History of Ancient and Medieval Education	Daily	8:30-10:00	101
Education 434a—Audio-Visual Instruction in the Secondary School	Daily	8:30-10:00	108
Education 434b—Audio-Visual Instruction in the Elementary School	Daily	8:30-10:00	108
Education 435a—Children's Literature	Daily	11:30- 1:00	108
Education 435b—Reading in Elementary Schools	Daily	8:30-10:00	103
Education 439—Mental Hygiene	Daily	7:00- 8:30	108
Education 465—Survey Course in the Education of Exceptional Children	Daily	8:30-11:30	115
Elementary Science 131—For Elementary Education Majors	Lecture	Daily	7:00- 8:30
Laboratory	TF	2:30-4:00	RA100
Philosophy 331—History of Ancient Philosophy	Daily	10:00-11:30	101

Psychology 231—Introduction to General Psychology	Daily	7:00- 8:30	100
Psychology 434—Mental Hygiene	Daily	7:00- 8:30	108
Library Science 434c—Audio-Visual Materials and Library Service	Daily	8:30-10:00	108

CONCENTRATED COURSES

June 6-June 24

Education 333b—Problems of Vision Deficiency	Daily	10:00- 1:00	
Education 338b—Science in Elementary Schools	Daily	8:30-11:30	D110

June 27-July 15

Education 538—Current Trends in Elementary Education....	Daily	8:30-11:30	D112
--	-------	------------	------

COLLEGE OF FINE ARTS

DEPARTMENT OF ART

Art 238—For Elementary Education Majors	Daily	7:00-10:00	A202
Art Education 330a-b—Art in the Elementary School.....		To be arranged	
Art Education 531—Advanced Problems in Art		To be arranged	
Art Education 535a—Art Supervision		To be arranged	
Art 630a-b—Thesis		To be arranged	
Design 121, 122, 125—Basic Course	Daily	10:00- 1:00	A206
History of Art	Daily	8:30-10:00	A102
Jewelry 431-432—Construction Processes	Daily	7:00-10:00	A308
Metalwork 331-332—Construction Processes	Daily	7:00-10:00	A308

WORKSHOP

Art Education Workshop	June 27-July 15	A202
------------------------------	-----------------	------

DEPARTMENT OF MUSIC

Chorus	Daily	2:00- 3:00	Main Aud
Music Education 231—Methods in Elementary Grades— For Elementary Education Majors	Daily	7:00- 8:30	M200
Music Education 536—Psychology of Music	Daily	7:00- 8:30	M100
Private Lessons: Piano, Voice, Organ		To be arranged	

WORKSHOPS

Music Therapy Workshop (Counts as Music 430)	June 6—		
	June 24	10:00- 1:00	M100
Piano Methods Workshop (Counts as Music Education 430)	June 6—		
	July 15	8:30-10:00	M108

Registration for these Workshops must be submitted and approved by June 1.

For information and registration write to: Dr. J. Wilgus
Eberly, Director, Department of Music.

COLLEGE OF HEALTH, PHYSICAL EDUCATION, AND RECREATION

Health Education 233—Gross Anatomy of Skeleton, Joints and Muscles; Kinesiology	Daily	10:00-11:30	
Health Education 234—Gross Anatomy of Skeleton, Joints and Muscles; Kinesiology	Daily	11:30- 1:00	
Physical Education 110T—Tennis	Daily	7:00- 8:30	
Physical Education 110aB—Beginning Badminton	Daily	7:00- 8:30	
Physical Education 110aG—Beginning Golf	Daily	6:00- 8:00	
Physical Education 110aT—Beginning Tennis	Daily	7:00- 8:30	

Physical Education 110bB—Intermediate Badminton	Daily	7:00- 8:30
Physical Education 110bG—Intermediate Golf	Daily	6:00- 8:00
Physical Education 110bT—Intermediate Tennis	Daily	7:00- 8:30
Physical Education 111aF—Beginning Folk Dance	Daily	11:30- 1:00
Physical Education 111aM—Beginning Modern Dance	Daily	7:00- 8:30
Physical Education 111aT—Beginning Tap Dance	Daily	2:00- 3:30
Physical Education 111bF—Intermediate Folk Dance	Daily	11:30- 1:00
Physical Education 111bM—Intermediate Modern Dance	Daily	7:00- 8:30
Physical Education 112a—Beginning Swimming and Diving	Daily	11:30- 1:00 6:00- 8:00
Physical Education 112b—Intermediate Swimming and Diving	Daily	11:30- 1:00 6:00- 8:00
Physical Education 116—Beginning Modern Dance	Daily	7:00- 8:30
Physical Education 117a—Beginning Swimming and Diving	Daily	11:30- 1:00
Physical Education 117b—Intermediate and Advanced Swimming and Diving	Daily	11:30- 1:00
Physical Education 119—Beginning Folk Dance	Daily	11:30- 1:00
Physical Education 210B—Badminton	Daily	7:00- 8:30
Physical Education 211—Beginning Tap Dance	Daily	2:00- 3:30
Physical Education 218—Intermediate Modern Dance	Daily	7:00- 8:30
Physical Education 310G—Golf	Daily	6:00- 8:00
Physical Education 311F—Intermediate and Advanced Folk Dance	Daily	11:30- 1:00
Physical Education 313—Intermediate and Advanced Tap Dance	Daily	2:00- 3:30
Physical Education 315—Advanced Modern Dance	Daily	7:00- 8:30
Physical Education 316—Composition in Modern Dance	Daily	7:00- 8:30
Physical Education 415—Problems in Health, Physical Education, and Recreation	Daily	8:30-10:00
Physical Education 425—Problems in Health, Physical Education, and Recreation	Daily	8:30-10:00
Physical Education 435—Problems in Health, Physical Education, and Recreation	Daily	8:30-10:00
Physical Education 510B—Current Theories and Practices in the Teaching of Badminton	Daily	7:00- 8:30
Physical Education 510G—Current Theories and Practices in the Teaching of Golf	Daily	6:00- 8:00
Physical Education 511F—Current Theories and Practices in the Teaching of Folk Dance	Daily	11:30- 1:00
Physical Education 511M—Current Theories and Practices in the Teaching of Modern Dance	Daily	7:00- 8:30
Physical Education 511T—Current Theories and Practices in the Teaching of Tap Dance	Daily	2:00- 3:30
Physical Education 512SD—Current Theories and Practices in the Teaching of Swimming and Diving	Daily	11:30- 1:00
Physical Education 515—Problems in Health, Physical Education, and Recreation	Daily	8:30-10:00
Physical Education 525—Problems in Health, Physical Education, and Recreation	Daily	8:30-10:00

Physical Education 530—Tests and Measurements in Health, Physical Education, and Recreation	Daily	11:30- 1:00
Physical Education 532—Supervision in Health, Physical Education, and Recreation	Daily	8:30-10:00
Physical Education 535—Problems in Health, Physical Education, and Recreation	Daily	8:30-10:00
Dance 630a—Thesis	To be arranged	
Dance 630b—Thesis	To be arranged	
Health Education 630a—Thesis	To be arranged	
Health Education 630b—Thesis	To be arranged	
Physical Education 630a—Thesis	To be arranged	
Physical Education 630b—Thesis	To be arranged	
Recreation 630a—Thesis	To be arranged	
Recreation 630b—Thesis	To be arranged	
Children's Swimming Classes	To be arranged	

WORKSHOPS

Workshop in Teaching and Directing Synchronized Swimming	June 6-June 24
Workshop in Twirling, Drill Teams, and Cheer Leaders	June 27-July 15

COLLEGE OF HOUSEHOLD ARTS AND SCIENCES

Child Development 332—The Pre-School Child	Daily	7:00- 8:30	HA132
(Including Laboratory in Nursery School)			
Clothing 531—Theories of Clothing Design and Construction			To be arranged
*Clothing 560—Research in Clothing and Costume Design			To be arranged
*Family Living 560—Research in Family Living			To be arranged
Foods and Nutrition 135—Elementary Food Preparation and Nutrition	Daily	7:00-10:00	HA115
Home Economics 535a—Research Methods in Household Arts and Sciences	Daily	7:00- 8:30	HA219
Home Economics 630a—Master's Thesis			To be arranged
Home Economics 630b—Master's Thesis, continued			To be arranged
Home Economics 730a—Doctor's Dissertation			To be arranged
*Home Economics 730b—Doctor's Dissertation continued			To be arranged
Home Economics 533—Evaluation in Home Economics Education	Daily		To be arranged
*Home Economics Education 560—Research in Home Economics Education	Daily		To be arranged
Home Management 445—Management in Family Living and House Residence	Daily		To be arranged
Institution Management 331—Quantity Cookery			To be arranged
Institution Management 432—Organization and Manage- ment			To be arranged
*Nursery Education 560—Research in Nursery Education			To be arranged
*Nutrition 560—Research in Nutrition			To be arranged
*Textiles 560—Research in Textiles			To be arranged
*Textile Technology 560—Research in Textile Technology			To be arranged
*Research courses may be taken up to 12 hours in one sum- mer, provided no other courses are taken. They may be taken for lesser credit provided no more than a total of one			

credit per week is taken in research combined with other courses.

CONCENTRATED COURSES

- *Home Economics 439a, b, c, d, e, f, g, h, i, j, k To be arranged
 Honors Course—a-Child Development; b-Clothing; c-Foods;
 d-Home Economics Education; e-Institution Management;
 f-Nutrition; g-Home Management; h-Housing; i-Equipment;
 j-Textiles; k-Family Living.
 **These courses may be taken on a concentrated three-week
 or on a six-week basis.

WORKSHOPS

Household Equipment Workshop	June 27-July 2
Modern Nutrition Workshop	July 5-July 9
Nursery Education Workshop	June 13-June 18
(This one-week Workshop is repeated three times	June 20-June 25
in order to meet schedules of those engaged	June 27-July 2
in operating nursery schools and child care centers)	
Rapid Food Preparation Workshop	June 20-June 25
Resource and Illustrative Material Workshop—for Cloth-	
ing and Textiles, Grooming, Family Living,	
and Child Development	June 6-June 18
Resource and Illustrative Material Workshop—for Foods	
and Nutrition	July 11-July 16
School Lunch Workshop	July 5-July 9

COLLEGE OF NURSING

Nursing 210—Fundamentals of Nursing (I).....Lecture.....	TTh	11:30- 1:00	409
Laboratory.....	F	2:00- 5:00	

SECOND TERM, SUMMER SESSION, 1955 JULY 18 TO AUGUST 24

Classes are held Monday through Friday

SUBJECT	DAY	HOOR	ROOM
---------	-----	------	------

COLLEGE OF ARTS AND SCIENCES

DEPARTMENT OF BIOLOGY

Zoology 141—Human Physiology for Students of			
Home Economics	Lecture.....	Daily	7:00- 8:00
	Laboratory.....	Daily	8:00-10:00
Biology 132—Principles of Biology	Lecture.....	Daily	10:00-11:00
	Laboratory.....	Daily	11:00- 1:00

DEPARTMENT OF BUSINESS AND ECONOMICS

Business 441—Work Experience	Daily	To be arranged	
Advanced Business, on demand	Hours	to be arranged	
*Advanced Business Education (Improving Instruction).....	On demand		
Economics 132—Current Economic Problems	Daily	7:00- 8:30	308
Economics, Advanced, on demand	Daily	To be arranged	308
*May be counted as a course in Education			

DEPARTMENT OF CHEMISTRY AND PHYSICS

Physics 235—Elementary Physics	Lecture.....	Daily	7:00- 8:30	Sc104
	Laboratory.....	Daily	8:30-10:00	Sc102
Chemistry 332—Foods Chemistry	Lecture.....	Daily	10:00-11:00	Sc208
	Laboratory.....	Daily	11:00- 1:00	Sc204

DEPARTMENT OF ENGLISH

English 131—Composition and Literature	Daily	7:00- 8:30	402
English 132—Composition and American Literature	Daily	8:30-10:00	402
English 231—Survey of English Literature	Daily	10:00-11:30	400
English 232—Survey of English Literature	Daily	11:30- 1:00	402
English 233—Remedial English	Daily	7:00- 8:30	402
English 433—Special studies in types of particular interest in both English and American literature. If a student seeks six hours of credit, she will take the course as 433c and 433d by special arrangement with the professor in charge	Daily	10:00-11:30	402
English 630a, 630b—Thesis		To be arranged	

DEPARTMENT OF HISTORY AND GOVERNMENT

Government 231—American Government and Citizenship....	Daily	10:00-11:30	312
Government 232—American Government and Citizenship....	Daily	8:30-10:00	312
History 134-1—History of the United States, after 1865....	Daily	8:30-10:00	418
History 134-2—History of the United States, after 1865....	Daily	10:00-11:30	418
History 338—Texas	Daily	7:00- 8:30	418

DEPARTMENT OF LIBRARY SCIENCE

Library Science 431—Library Materials for Young People....	Daily	8:30-10:00	L104
Library Science 433—Library Cataloging and Classifi- cation	Daily	7:00- 8:30	L105
Library Science 437—School Library Organization and Management	Daily	10:00-11:30	L104
Library Science 438—Library in the Community	Daily	10:00-11:30	L105
Library Science 530a—Literature of the Humanities and Social Sciences	Daily	8:30-10:00	L105
Library Science 532—Advanced Reference Services	Daily	7:00- 8:30	L105
Library Science 533a—The Public Library	Daily	11:30- 1:00	L104
Library Science 539a—Library Problems Seminar		To be arranged	
Library Science 539b—Methods of Research		To be arranged	
Library Science 630a&b—Thesis		To be arranged	

DEPARTMENT OF SOCIOLOGY

Sociology 237—Marriage and the Family	Daily	10:00-11:30	201
Sociology 331—Sociology of Childhood	Daily	11:30- 1:00	201

DEPARTMENT OF SPEECH

Speech 538—Speech Disorders	Daily	8:30-10:00	M116
Speech 432—Clinical Practice		To be arranged	
Speech 433—Advanced Clinical Practice		To be arranged	

COLLEGE OF EDUCATION

Education 132—Introduction to Educational Psychology.....	Daily	8:30-10:00	103
Educational 231—Principles of Secondary Education	Daily	10:00-11:30	100

Education 332—Measurements in Elementary or Secondary Schools	Daily	7:00- 8:30	108
Education 338a—Arithmetic in Elementary Schools	Daily	11:30- 1:00	108
Education 434b—Audio-Visual Instruction in the Elementary School	Daily	8:30-10:00	108
Education 434a—Audio-Visual Instruction in the Secondary School	Daily	8:30-10:00	108
Education 437b—Social Studies in Intermediate Grades.....	Daily	10:00-11:30	115
Education 532a—Techniques of Counseling	Daily	7:00- 8:30	101
Education 534a—Philosophy of Education	Daily	10:00-11:30	108
Education 537d—Special Problems in Supervision in the Elementary School	Daily	8:30-10:00	101
Education 431a—Child Psychology	Daily	10:00-11:30	101
Psychology 231—Introduction to General Psychology	Daily	8:30-10:00	100
Psychology 433—Child Psychology	Daily	10:00-11:30	101
Psychology—Techniques of Counseling	Daily	7:00- 8:30	101
Library Science 434c—Audio-Visual Materials and Library Service	Daily	8:30-10:00	108

COLLEGE OF FINE ARTS

DEPARTMENT OF ART

Art 630a-b—Thesis	To be arranged		
Drawing	Daily	10:00- 1:00	A203
Painting, Oil or Watercolor	Daily	10:00- 1:00	A205

DEPARTMENT OF MUSIC

Chorus	Daily	2:00- 3:00	Main Aud.
Music Education 232—Methods in Elementary Grades— For Elementary Education Majors	Daily	7:00- 8:30	M200
Music Education 530—Seminar in Music Education	To be arranged		
Private Lessons: Piano, Voice, Organ	To be arranged		

COLLEGE OF HEALTH, PHYSICAL EDUCATION, AND RECREATION

Health Education 539—School Health Instruction	Daily	8:30-10:00	
Physical Education 110aG—Beginning Golf	Daily	6:00- 8:00	
Physical Education 110bG—Intermediate Golf	Daily	6:00- 8:00	
Physical Education 112a—Beginning Swimming and Diving	Daily	11:30- 1:00	
		2:00- 3:30	
Physical Education 112b—Intermediate Swimming and Diving	Daily	11:30- 1:00	
		2:00- 3:30	
Physical Education 112c—Advanced Swimming and Diving	Daily	11:30- 1:00	
		2:00- 3:30	
Physical Education 117a—Beginning Swimming and Diving	Daily	11:30- 1:00	
Physical Education 117b—Intermediate Swimming and Diving	Daily	11:30- 1:00	
Physical Education 310G—Golf	Daily	6:00- 8:00	
Physical Education 510G—Current Theories and Practices in Teaching Golf	Daily	6:00- 8:00	
Physical Education 534—Research in Health, Physical Education, and Recreation	Daily	10:00-11:30	

Dance 630a—Thesis	To be arranged
Dance 630b—Thesis	To be arranged
Health Education 630a—Thesis	To be arranged
Health Education 630b—Thesis	To be arranged
Physical Education 630a—Thesis	To be arranged
Physical Education 630b—Thesis	To be arranged
Recreation 630a—Thesis	To be arranged
Recreation 630b—Thesis	To be arranged
Children's Swimming Classes	Daily 10:00-11:30 3:30- 5:00

COLLEGE OF HOUSEHOLD ARTS AND SCIENCES

*Clothing 560—Research in Clothing and Costume Design	To be arranged
Home Economics 630a—Master's Thesis	To be arranged
Home Economics 630b—Master's Thesis, continued	To be arranged
Home Economics 730a—Doctor's Dissertation	To be arranged
Home Economics 730b—Doctor's Dissertation, continued	To be arranged
Home Economics Education 533—Evaluation in Home Economics Education	Daily To be arranged
*Home Economics Education 560—Research in Home Economics Education	To be arranged
*Nutrition 560—Research in Nutrition	To be arranged
*Textiles 560—Research in Textiles	To be arranged
*Textile Technology 560—Research in Textile Technology....	To be arranged
*Research courses may be taken up to 12 hours in one summer, provided no other courses are taken. They may be taken for lesser credit provided no more than a total of one credit per week is taken in research combined with other courses.	

CONCENTRATED COURSES

July 18-August 6	
Nutrition 430—Advanced Nutrition	To be arranged HA129
August 8—August 24	
Textiles 533—Advanced Principles of Textile Testing.....	To be arranged HA330
*Home Economics 439a, b, c, d, e, f, g, h, i, j, k	To be arranged
Honors Course—a-Child Development; b-Clothing; c-Foods; d-Home Economics Education; e-Institution Management; f-Nutrition; g-Home Management; h-Housing; i-Equipment; j-Textiles; k-Family Living	
**These courses may be taken on a concentrated three-week or on a six-week basis.	

WORKSHOPS

Clothing and Costume Design Workshop	August 1-August 6
Home Demonstration Tailoring Workshop	July 11-July 29
Rapid Clothing Construction Workshop	July 25-July 30
Textile Workshop	July 18-July 23

COLLEGE OF NURSING

Nursing 211—Fundamentals of Nursing (II) Lecture.....	TTh 11:30- 1:00	409
Laboratory.....	F 2:00- 5:00	

SUMMER SCHOOL EXPENSES, 1955

Expenses for each regular term of Summer School

REGULAR DORMITORY SYSTEM

	Texas	Out-of-State
Tuition	\$ 15.00*	\$ 25.00*
Fees (Medical and textbook rental)	4.00	4.00
Room and Board	80.50	80.50
Laundry Fee (Bed Linens)	1.50	1.50
Total	\$101.00	\$111.00

Payable for Texas students on entrance \$57.00, for out-of-state students \$67.00. The second payment of \$44.00 is payable for the first term June 20-24 and for second term August 1-5.

Mature and graduate students may reside, during the summer, in one of the college dormitories set aside for their use. These students room alone and pay an additional fee of \$7.50 for each summer term.

A considerable number of air-conditioned rooms are available to summer school students, regardless of classification, for a nominal additional charge. Information concerning this service may be secured from the Office of the Dean of Admissions-Registrar.

RUSK COOPERATIVE SYSTEM

	Texas	Out-of-State
Tuition	\$ 15.00*	\$ 25.00*
Fees (Medical and textbook rental)	4.00	4.00
Board and Room	45.00	45.00
Total	\$64.00	\$74.00

Payable for Texas students on entrance \$35.50 and for out-of-state students \$45.50. The second payment of \$28.50 is payable for first term June 20-24 and for the second term August 1-5.

Students Not Residing on the Campus

	Texas	Out-of-State
Tuition	\$ 15.00*	\$ 25.00*
Fees (Medical and textbook rental)	4.00	4.00
Total	\$19.00	\$29.00

*The tuition charge is reduced \$5.00 for students who enroll for less than four semester hours of work, credit or non-credit.

Room Assurance Fee: Each prospective summer student who desires accommodations in the College Residential System must pay a room assurance fee before registering. The amount of this fee, payable in the Office of the Dean of Admissions-Registrar, is \$4.00 per student for the regular dormitories and \$2.00 per student in the Rusk Cooperative Units. Refund of one-half of a room assurance fee may be requested prior to May 15 by a student who finds that she will not be able to matriculate in the College. After this date no part of the fee is refundable. For the student who enrolls, one-half of the fee will cover use of linen and key; the other half will be refunded, less necessary deductions for loss or damage, upon withdrawal of the student.

Laboratory Fees

The following charges are made for laboratory courses and are payable at the time of registration:

Each course of three semester hours or less	\$2.00
Each course of four semester hours or more	\$4.00
Laboratory fees are not refundable.	

Fees for Applied Music

There are no charges for class instruction in theory or applied music. The following charges are made for private instruction in piano, organ, violin, or voice for a six weeks term.

One semester hour credit (two 45-minute lesson periods per week, minimum 1 hour daily practice)	\$18.00
Two semester hours credit (two 45-minute lesson periods per week, minimum 1½ hours daily practice)	35.00
Non-credit, one 45-minute lesson per week	9.00

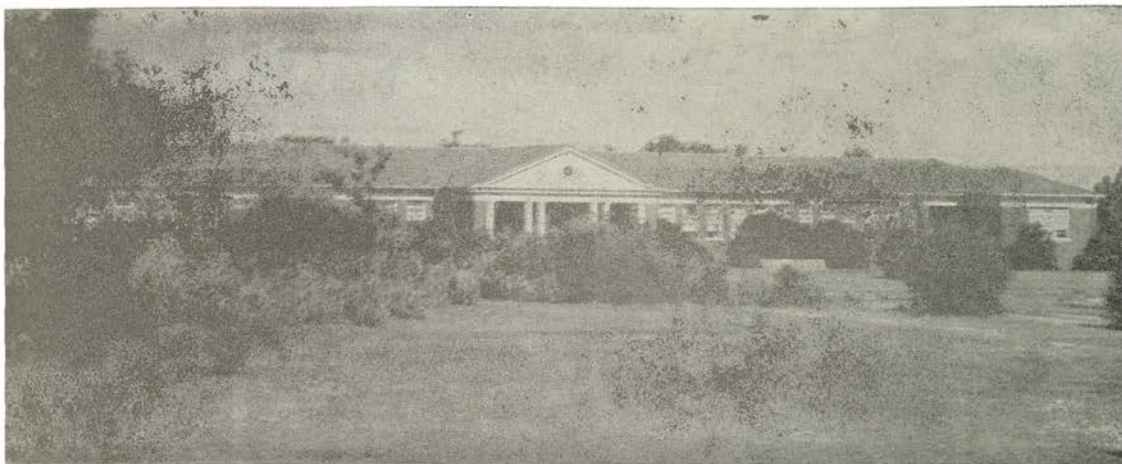
WORKSHOPS AND CONCENTRATED COURSES

	Texas		Out-of-State		
	Tuition	Fees	Tuition	Fees	Board & Room
1 semester hour credit	\$ 7.50	\$1.00	\$12.50	\$1.00	\$14.00
2 semester hours credit	9.00	2.00	15.00	2.00	28.00
3 semester hours credit	10.00	2.50	16.65	2.50	41.00
4 semester hours credit	15.00	3.00	25.00	3.00	54.00

Each prospective workshop student who desires accommodations in the College Residential System must pay a room assurance fee before registering. The amount of

the fee payable in the Office of the Dean of Admissions-Registrar, is \$4.00. Refund of one-half of this fee may be requested prior to May 15 by the student who finds that she will be unable to matriculate for the Workshop. After this date no part of the fee is refundable. For the student who enrolls, one-half of the fee will cover use of linen and key; the other half will be refunded less deductions for loss or damage, upon withdrawal of the student. This refund will be mailed to the student. At the time of registration, workshop students will pay a fee to cover the laundering of linens furnished by the College. For Workshops carrying one semester hour credit, the fee will be 50c; for two semester hours credit, 75c; for three semester hours credit, \$1.00; four semester hours credit, \$1.50.

All regularly enrolled students will receive a Summer School Student Activity Ticket without additional charge.



Demonstration School

Return This Handy Check List as Soon as Possible

Francis W. Emerson, Dean of Admissions, Drawer A, TSCW Station,
Texas State College for Women, Denton, Texas

- ☐ Send me TSCW entrance application and room reservation for room in—
- ☐ Regular Dormitory System
 - ☐ Rusk Co-operative System

FOR—

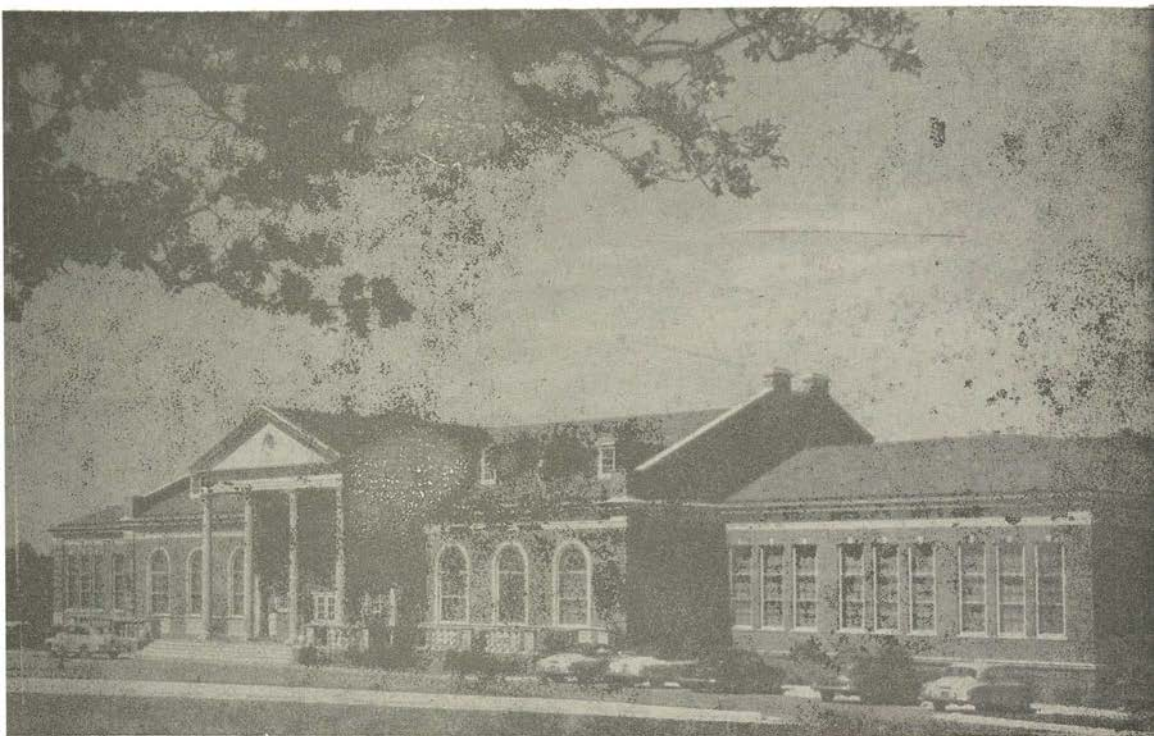
- ☐ Summer Session, 1955
- ☐ Regular Session, 1955-56

- ☐ Send me TSCW's Regular College Catalogue

NAME IN FULL

STREET AND NO.

CITY, STATE



Students Dine in Comfort in Air-Conditioned Hubbard Hall

