

EQUIPMENT

The Texas State College for Women has excellent facilities for carrying on this work. The Department of Speech is now located in its new three-story brick building. Two auditoriums are available for the use of the play production groups.

In addition to these houses, the outdoor theater will be used for the production of the plays. This is a well located and arranged outdoor theater with adequate stage and excellent acoustics. A sketch of a setting on the stage of the outdoor theater is shown on the front of this folder.

The Children's Theater will have its own house, a small theater and stage well suited to the needs of production of children's plays.

OFFICERS OF ADMINISTRATION

Louis H. Hubbard, B. S., M. A., Ph. D., LL. D....
.....President
E. V. White, B. S., M. A., LL. D...Dean of the College
Jessie H. Humphries, B. A., M. A.,.....
.....Associate Dean of the College
Mrs. Mattie Lloyd Wooten, B. A., M. A.....
.....Dean of Women
Walker King, B. A.....Registrar
W. M. Loveless.....Business Manager
Joe E. Reed.....Auditor and Treasurer

In one of the College gardens

DEPARTMENT OF SPEECH

EARL C. BRYAN, B. S., B. L. I., M. A.....Professor
and Director of the Department of Speech

GILES WILKESON GRAY, Ph. D.,— Associate Professor
of Speech, Louisiana State University, will be
a special lecturer.

STAFF OF THE INSTITUTE

FRANCIS W. EMERSON, B. A., M. A.

CHILDREN'S THEATER

Formerly director of dramatics in Sherman High School; director of dramatics at Austin College; director of Sherman Little Theater; special training as supervisor of speech activities in the public schools; for several seasons director of dramatics and Children's Theater at Texas State College for Women.

EMORY G. HORGER, B. A., M. A.

DIRECTING HIGH SCHOOL PLAYS

For six years teacher and director of dramatics in the public schools of Texas; for two years director of a community theater; a season in professional theater with Stuart Walker Company, Cincinnati; two years director of Children's Theater; for the past seven years director of the College Theater, Texas State College for Women.

ARCHIBALD MCLEOD, B. A., M. A.

STAGE SCENERY AND LIGHTING

Formerly director of the Iowa City Community Players and the Greystone Players, Elizabeth, New Jersey; professional acting experience in stock, Elizabeth, New Jersey; instructor in scene design at Kansas State Teachers College; and for the past two years scene designer and art director of the College Theater, Texas State College for Women.

THOMAS A. ROUSSE, B. B. A., M. A., L. L. B.

COACHING HIGH SCHOOL DEBATE

Coach of Debate, University of Texas since 1929; member of the Executive Committee of the Interscholastic League of Texas; author of bulletins for Interscholastic League on debate subjects; his debate teams and extemporaneous speakers have won Missouri Valleys Tournaments and Iowa University Forensic Contests; now Associate Professor of Public Speaking, University of Texas.

Number 228

May 15, 1937

Issued Semi-Monthly by the Texas State College for Women, Denton, Texas. Entered December 17, 1917, Denton, Texas, as second-class matter, under Act of Congress August 24, 1912.

ADMISSION AND REGISTRATION

Requirements for admission to the Institute of Speech Activities are the same as for admission to college. The work is open to both college graduates and undergraduates. No previous training or experience in Speech is necessary for teachers or others interested in the work for professional reasons. An official transcript of your college record should be sent to

The Registrar,
Texas State College for Women
Denton, Texas

On all correspondence with the registrar, designate *Institute of Speech Activities*.

Registration will begin at 7:30 A. M., Tuesday, June 1, 1937. Students should report to the office of the registrar to begin registration. On all registration forms designate *Institute of Speech Activities*.

COST OF ATTENDANCE

The College charges for six weeks' summer Speech Institute are as follows:

Tuition	\$12.50
Book-rental, laboratory, medical and student activity fee (optional).....	4.00
Room rent.....	10.00
Board	30.00
Total.....	\$56.50

Of the total of \$56.50, \$36.50 is payable at the beginning of the term and \$20.00 at mid-term.

DEPOSIT

In addition to the charges above enumerated, each student is required to make a book, laboratory, and material deposit of \$6.00 and each dormitory student a linen deposit of \$2.50. All of the \$6.00 deposit and one-half of the \$2.50 deposit are refundable at the time of withdrawal.

COST OF ATTENDANCE FOR HIGH SCHOOL STUDENTS

Board and Room rent.....\$36.00

Of the \$36.00, \$20.00 is payable at the beginning of the term and \$16.00 at midterm.

The deposit requirement stated above also operates for high school groups.

FOR FURTHER INFORMATION OR FOR
A REGULAR SUMMER SESSION CATALOGUE,
ADDRESS:

THE SPEECH INSTITUTE
BOX 775, TEXAS STATE COLLEGE FOR WOMEN
DENTON, TEXAS

College
Bulletin
228

College Bulletin



Institute of Speech Activities

For Men and Women

*A Six-Weeks School for Interscholastic League
Directors of Dramatics and Debate*

Directing High School Plays

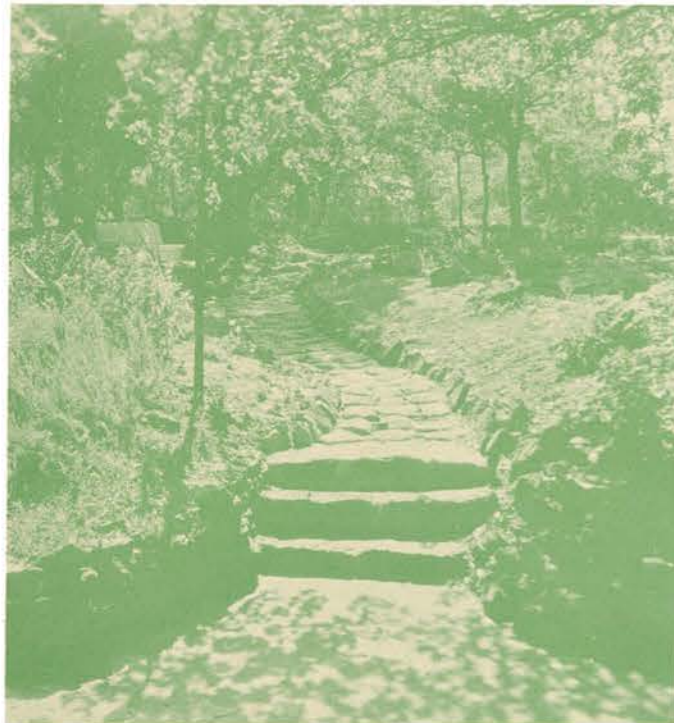
Coaching High School Debate

Stage Scenery and Lighting

Children's Theater

June 1 to July 10, 1937

TEXAS STATE COLLEGE FOR WOMEN
DENTON, TEXAS



INSTITUTE OF SPEECH ACTIVITIES

offers

Opportunity to Study Play Direction and Debate Coaching in a Real Situation with High School Actors and Debaters

Demonstration of Effective Methods in Play Directing and Debate Coaching

Exchange of Ideas and Information on Problems in These Activities

THE INSTITUTE OF SPEECH ACTIVITIES, conducted by the Department of Speech, Texas State College for Women, has been organized with the cooperation of the Interscholastic League to meet the needs of teachers engaged in the direction of extra-curricular speech activities.

Instruction will be both theoretical and practical, with emphasis on actual rehearsal, practice, and performance in plays and debates. Teachers who enroll in this institute will engage in the practical work of producing plays and debates.

The production activities will be carried on through a group of selected high school students. These groups will be known as "All-State Players" and "All-State Debaters," and will be selected from outstanding performers in the Interscholastic League meets. "All-State Players" will rehearse and perform a number of one-act and full-length plays. The "All-State Debaters" will engage in a series of practice and model debates on the question to be used in the Interscholastic League in 1938.

Scene from *The Good Hope*



COURSES AND CREDITS

Full college credit is given for all the courses in the Institute. The work articulates with the work of the summer session, enabling students to take other courses in the Department of Speech. Women may enroll for courses in other departments of the college. A student may earn a total of six semester hours in six weeks. All credits earned are subject to transfer if desired. Either the course in Directing High School Plays or the course in Coaching High School Debate may be accredited as Education.

DIRECTING OF HIGH SCHOOL PLAYS MR. HORGER

Selecting, casting, and directing high school plays. Emphasis on tournament production. Problems: selecting the play, preparing the prompt-book, try-outs and casting, conducting rehearsals, coaching the actor, organization for dress rehearsals, and performance. Demonstrations of all problems and techniques discussed will be made in rehearsals with "All-State Players."

COACHING OF HIGH SCHOOL DEBATE MR. ROUSSE

A practical course in coaching debaters for participation in contests. Students in the class will receive lectures by the instructor, participate in discussion of problems and methods, and become acquainted with all phases of the question to be used in the Interscholastic League Debates in 1938. The instructor in the course and the students under his supervision will coach teams of the "All-State Debaters" in practice debates and model debate tournaments.

SCENERY AND LIGHTING FOR HIGH SCHOOL STAGES

MR. MCLEOD

Designing and executing scenery and lighting. Special attention to problems of high school production and to adapting the scenery to available space, equipment, and budget. Students in the course will design, construct, paint, and assemble all types of scenery. The practical work will consist of preparing scenery and lights for the plays produced by the "All-State Players."

CHILDREN'S THEATER MR. EMERSON

A Children's Summer Theater will be operated as a laboratory for the course. A group of local children will constitute the acting company for this theater. A series of plays will be rehearsed and produced during the six weeks term. Teachers who enroll for this course will direct, design, and execute scenery, costumes, and lighting, and take part in all phases of management of a children's theater.

HIGH SCHOOL SCHOLARSHIPS

Accommodations have been arranged by the Institute of Speech Activities for a limited number of high school actors and debaters who will be selected for membership in the "All-State Players" and "All-State Debaters."

Outstanding performers in the state, regional, and district meets may make application for membership in these groups. Sophomores, juniors, and seniors are eligible, but first consideration will be given underclassmen. Selection will be made on the basis of excellence with preference given to outstanding performers in the highest meets.

The group will live on the campus and will take part in a planned program of study, rehearsal, performance, and recreation under supervision of the college. The "All-State Players" will take part in two programs of one-act plays and a full-length play. The "All-State Debaters" will participate in a series of practice and model debates. Students in both groups will be given training in the fundamentals of the activities.

Negotiations are under way for presenting the plays produced by the "All-State Players" at the Greater Texas and Pan-American Exposition in Dallas.

Only those high school students who are granted scholarships will be permitted to attend the Institute. The scholarship represents a cash value of \$20.50.

Winners of "All-Star Cast" awards for actors in the regional tournaments and first place winners in the district tournaments should write for application blanks immediately. Winners and runners-up in debate in regional meets should write for application blanks immediately.

If graduating seniors are selected for membership in these groups they may, upon presenting satisfactory college entrance credits, enroll for certain freshman courses in the college. In such case it will be necessary for the student to pay the college fees and tuition for regular students.

COST FOR HIGH SCHOOL STUDENTS

The special rate for board and room for the members of the high school group is given in the section on "Cost of Attendance."



Designs for two plays produced last season. Lower: An English drawing room for *Pygmalion*; Upper: A convent in Spain for *The Cradle Song*. Both designs use the same pieces of scenery in the same positions, with changes in treatment.

LIBRARY

Several of the larger play publishers are furnishing collections of their one-act and full-length plays and books on play production. One publisher has agreed to send 200 volumes. This material will be available to all who are enrolled in the Institute. Teachers will readily recognize the advantage in having access to plays especially recommended for high school work. For work in debating, in addition to the excellent facilities of the large college library, special materials on the question will be available.

LIVING ACCOMMODATIONS

Students enrolled in the Institute of Speech Activities may secure room and board in the college dormitory system. The College operates a system of eight modern brick dormitories and a number of other smaller student homes. For the convenience of mature women students one brick dormitory will be available for their use. A large and comfortably appointed clubhouse adjoining the campus has been set aside as a dormitory for men.

Girls in the high school group will have a special wing of one of the regular dormitories. Boys of the high school group will be housed in the men's clubhouse.

Meals will be served in the new, modern dining room. Mature students may secure meals at restaurants near the campus if they desire.